



Glebe Parent Newsletter

Friday 7th October 2022



I hope you have all had a good few days since the last newsletter!

Weekly Attendance (w/e 7.10.22)

5I	99.7	5G	96.9
RP	99.2	3ME	96.2
2G	98.7	6K	95.3
RW	98.4	4J	95
3V	98.1	5V	94.5
6C	98.1	2L	94
2F	98	1S	93.7
4R	97.9	RB	87
6L	97.8		
1A	97.3		
1C	97.2		
4JL	97.2		
3A	96.9		

Whole School:

96.6%

Census

Thank you to those who signed their Reception, year 1 or year 2 child up for a school meal yesterday. We had **86%** take up which is a 5% increase on last year's figure. There will be another census in the spring term (date to follow) and I will ask you to order on that day too as the funding is decided based on the average take up over the two days.

'New' Uniform - Angels

'Angels Uniforms', who supply Glebe sweatshirts, cardigans, polo shirts, and fleeces, are resuming their **school delivery service**.

Uniform can be ordered online at www.angelsuniforms.co.uk. If you place an order on their website by Wednesday and select 'Collect from Store', Angels will aim to deliver your order to school *free of charge* by Friday. We will then deliver it to your child's class.

You can visit Angels who are located at 317 Rayners Lane, Pinner, HA5 5EH if you wish to buy the items directly and try the items before buying.

Pre-loved Uniform Sale

Don't forget: Our next sale is next Thursday (13th October)!

If you are unable to make it here in person, you can still order via email glebeuniformsales@gmail.com with the items and sizes you need.

All of our efforts so far have managed to raise lots of money, which is going directly back into the school.

Year 6 – £200 – are putting theirs towards their end of year residential trip and their activity week

Thank you so much for your donations in our box in the school foyer. Please make sure you wash items and remove name labels before donating. Thank you.

In the current financial climate if you do find yourself struggling with the cost of uniform we are here to help. Please speak to any member of Glebe staff.

Thank you for your continued support.

Mrs. Whittaker (SRP Thursdays and Fridays only)
Mrs. Fitzwater (Nursery)
Mrs. Sumrakova (SRP)

Anti-Social Parking

This car has been parked on the pavement on double yellow lines on two days this week. Coincidentally, this car was also spotted speeding in the roads around school at the end of the school day a couple of weeks ago.

Parking on the pavement prevents pedestrians from being able to safely use the pavement, particularly those with prams and pushchairs and puts people in danger.



Online Safety

Have you read some of Oliver Jeffer's books such as Here We Are? He has teamed up with Professor Stephen Smartt and Nerve Centre to create Our Place in Space, which includes fun online challenges that your child might like to try at home.

See: <https://ourplaceinspace.earth/learn/monthly-challenge/challenge-4-ella-podmore>

MUGA Timetable

Some parents have asked us to share the timetable for the MUGA so you (and your children) know when it's their class' turn so they know when they can bring in footballs, etc.

	Morning Play 10:30 – 10:50 Reception – Year 3	Morning Play 11:00 – 11:20 Year 4 - 6	Lunchtime 12:00 – 12:30	Lunchtime 12:30 – 1:30	Reception Playground (12:30 – 1:30)
Monday	Spelling shed winners	Spelling shed winners	Year 2	Year 3	Year 5
Tuesday	Doodle maths winners	Doodle maths winners	Year 1	Year 6	Year 3
Wednesday	Year 3	Year 4		Year 5	Year 6
Thursday	Year 2	Year 5		Year 6	Year 4
Friday	Year 1	Year 6		Year 4	Year 6

Playground Toys

Just a reminder that any toy your child brings to school should be small enough to fit in their class tray.

We also ask that you do not send in anything electronic or toys that are valuable (financially or sentimentally) as things can get lost or broken.

Key Dates Coming Up

- Monday 10th October:** Year 4 autumn showcase at 9.15am – parents welcome (no parking on site)
- Tuesday 11th October:** Year 4 autumn showcase at 2pm – parents welcome (no parking on site)
- Wednesday 12th October:** Year 4 autumn showcase at 6.30pm – parents welcome (no parking on site)
- Thursday 13th October:** Pre-loved uniform sale in the small hall
- Monday 17th October:** Parents' Evening for Nursery, Years 1, 3 and 5 (4pm- 7pm)
- Tuesday 18th October:** Parents' Evening for Reception, Years 2, 4 and 6 (4pm – 7pm)
- Wednesday 19th October:** Parents' Evening for Nursery, Years 1, 3 and 5 (4.30pm – 7.30pm)
- Thursday 20th October:** Parents' Evening for Reception, Years 2, 4 and 6 (4.30pm – 7.30pm)
- 5V Class Assembly at 9.15am – parking for parents attending on the playground from 9.05am (not before for health and safety reasons)
- Friday 21st October:** Break for half term at usual time
- FOG Halloween costume shop from 3pm in the small hall
- Monday 24th – Friday 28th October:** Half term
- Monday 31st October:** Return to school for all (no training day)
- Wednesday 2nd November:** Spooky Sparkle Disco for Years 1 and 2 (5pm- 6pm)
- Thursday 3rd November:** Spooky Sparkle Disco for Years 3 and 4 (5pm- 6pm)
- Spooky Sparkle Disco for Years 5 and 6 (7pm- 8pm)

FOG News

FOG AGM

Thank you to those who came to the FOG AGM on Wednesday evening.

New trustees were appointed to key roles:

Co-Chairs

Lis Aherne
Donna Barcessat

Secretary

Maria Kouroushi

Treasurer

Danielle Au

Spelling Shed and Doodle Maths

Weekly Winners

Spelling Shed

1C

5V

DoodleMaths

RW

3A

Enjoy your weekend,
whatever you have
planned.

Mrs Penney 😊

FRIENDS OF GLEBE ARE PLEASED
TO INVITE YOU TO OUR

SPOOKY SPARKLE DISCO

Wednesday 2nd November
Years 1 & 2 5pm – 6pm

Thursday 3rd November
Years 3 & 4 5pm – 6pm
Years 5 & 6 7pm – 8pm

£5 including a snack bag
tickets must be bought in advance from PTA events
code glebeprimaryickenham, (QR code below) or
www.pta-events.co.uk/glebeprimaryickenham



Tickets on sale NOW
(ticket sales close Friday 21st October)



Nursery



Making our own houses.



This week we talked about different homes and houses.



Subitising



We enjoyed using the outdoor equipment.



PIC•COLLAGE

Reception



Year 1



We wrote poems on National Poetry Day.

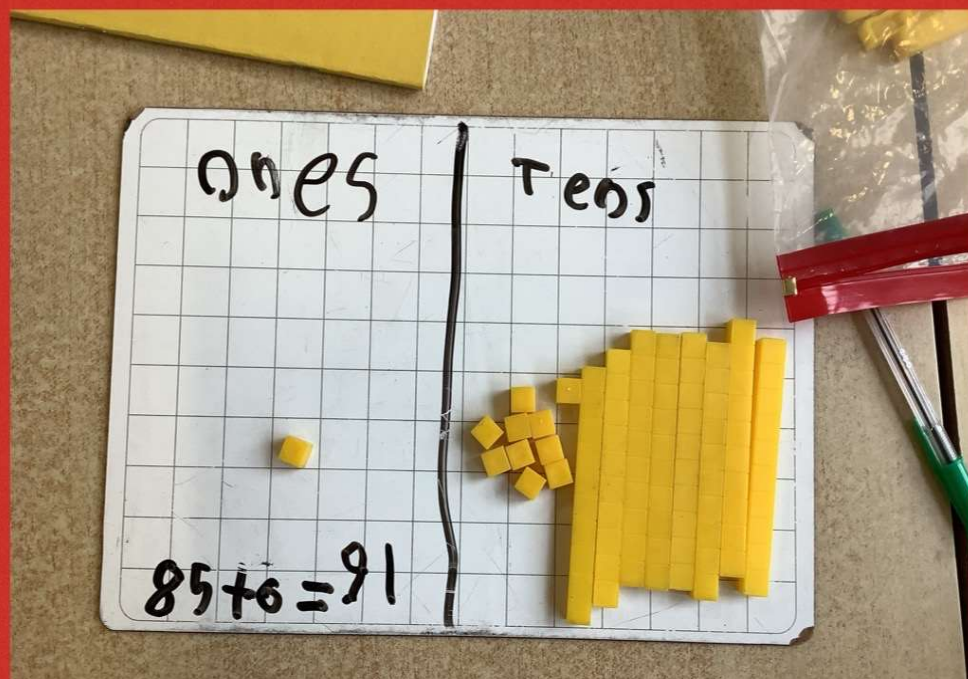
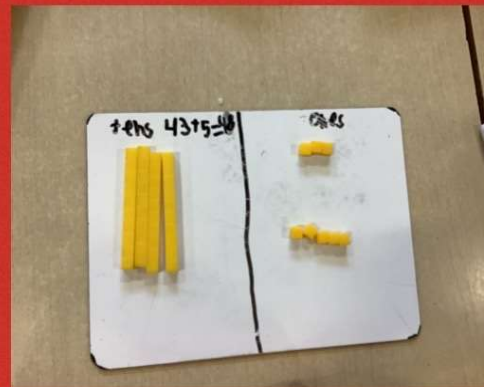
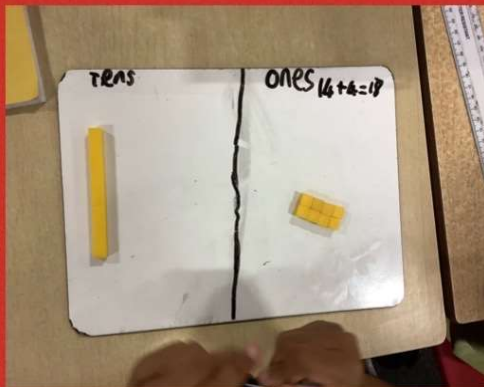


We drew our self portraits in art.

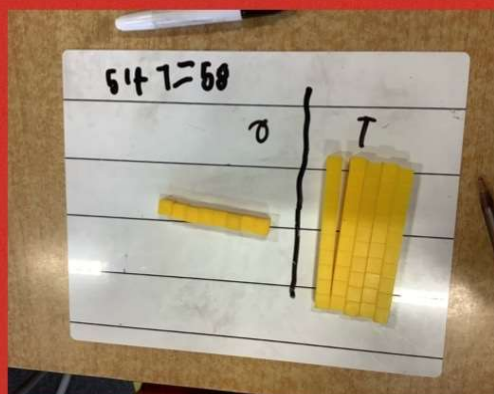


PIC•COLLAGE

Year 2



We have been using dienes to add a 2-digit and a 1-digit number together.



Year 3

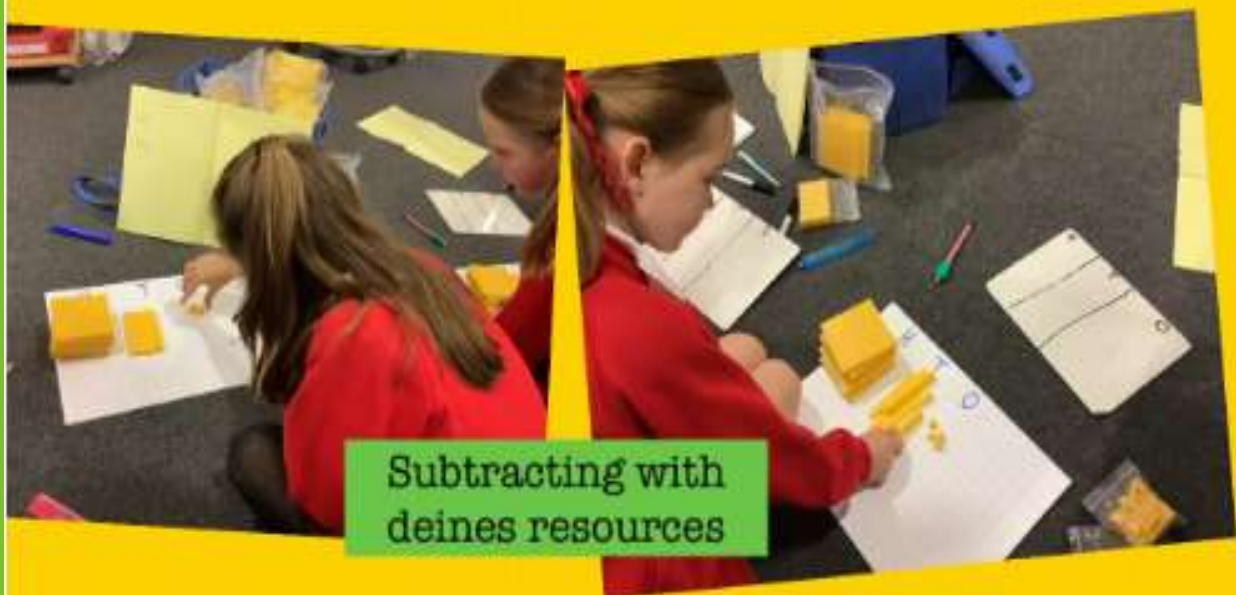
In year 3, we have been investigating shadows in science, using dienes to help us subtract in maths and exploring maps in geography.



Year 4



Playing air
hockey in the
hall for PE



Subtracting with
deines resources

Year 5



Year 5



Year 6



Year 6 had fun creating their favourite freeze frames from The Highway Man.

