



Glebe Primary School Nursery Transition Meeting



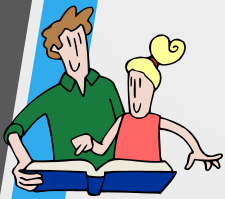
What options do we currently offer?



- There are 2 separate nursery sessions for Glebe nursery and the added option for paid for/ funded top up sessions.
- The morning nursery session begins at 8.40am or 8.50am and runs until 11.35am or 11.45am.
- The afternoon nursery sessions begins at 12.30pm and ends at 3.20pm or 3.30pm.
- If your child is full time then they will arrive at 8.40/50 and leave at 3.20/30. Lunch will be between 11.30 and 12.30.

Housekeeping

- In case of a fire alarm (we don't have one planned), please leave by the fire doors and wait there. The staff will bring the children out of nursery.
- Toilets are in the main reception area.
- All this information plus a specifically tailored nursery brochure can be found on the school website – under 'our learning' and 'Nursery'.



Drop off and Pick up

- Morning nursery – The school gates at the nursery entrance will be opened from 8.30am, the nursery door is opened at 8.45am. The gate will be reopened at 11.35am for you to come in and collect your child.
- Afternoon nursery – The school gate at the nursery entrance will be opened at 12.35pm promptly for you to drop your child off. From 3.20pm the School gates will be opened and the main nursery doors will be used to collect your child.



Drop off and Pick up reminders

- Please try to be prompt when dropping off and picking up your child, but we do understand that emergencies occur. In the case of an emergency and you are going to be late please, where possible, contact the school.
- Please let us know if someone different is picking up your child. We will not allow someone that we do not know or have pre-arranged information about to collect your child.
- For the first week, when you bring your child into nursery you are very welcome to come in with them to stay for a few minutes.
- Please settle your child with their new friends or at an activity before you leave, unfortunately, although we would love to- we cannot invite parents to stay for whole sessions as this can cause some of the children to be unsettled.
- Please sign up for Dojo as soon as possible after receiving your log-ins.



Problems settling your child

- All children have a wobble sometimes, just as we adults do. Some children find the thought of, or the actual separation at drop-off time really tricky. This is very normal so please try not to worry.
- Remain calm and try not show them that you are upset as they often pick up on this.
- Talk to a member of staff about any concerns.
- Please feel free to ring the school office who will contact us for a progress report. If you are signed up for Class Dojo we can also send you an update regarding how your child is if this will help.
- If your child continues to be upset we will contact you to arrange an earlier collection and set up a drop off strategy with you.

'All about Me' books



- To aid the transition we ask you to provide us with some simple information regarding your child.
- This helps us to get to know them and to find ways to support them during their transition.
- The books can be filled in with your child over the summer, this will help those conversations about school. Quite often these talks will help your child become excited and happy about their start to school.
- They can also be a great way of finding out about and supporting your child with any worries your child may have.
- These are available on the website to download. If you are unable to print a copy then please do request a copy from the office.



Staffing



- Nursery is led by a fully qualified teacher. The teacher this year will be Miss Wands.
- The enrichment sessions for children taking up a full time place will be led by Mrs Message.
- Please feel free to pass on information and messages to any member of staff in the nursery or send any messages via the Dojo app.
- Key workers will be allocated after the children have settled. This allows us to look at the bonds children make and who they may be most comfortable with.



The Nursery curriculum

- We follow the Early Years Foundation Stage Curriculum in the nursery.
- The curriculum is based around learning through play, being encouraged to extend and articulate their knowledge through careful talk and questioning.
- The curriculum will be taught through topic based activities which will be very much led by the children's interests.
- All activities will be carefully planned by myself and Mrs Message. The activities will always be based on play with a learning intention linked.
- The children will be taught the Little Wandle, 'Foundations for Phonics' program. This is a very successful programme that aids initial listening, reading and rhyming skills in young children.

Speaking and listening skills

- On the school website you will find a leaflet regarding talking with your child.
- Developing these skills at an early age help children throughout all aspects of their academic career.
- Good listening and talking skills provide the basic ground work for learning to read, write, listen, learn, think critically and develop socially.
- Please feel free to practice the skills within the leaflet with your child during the holidays.
- Independence skills – putting on and taking off coats/jumpers/welly boots are also really useful skills for the children to be working on. Independence gives children the confidence to fly!



Uniform

- Each child is required to wear a Glebe School Jumper to nursery.
- Practical trousers or skirts should be worn to school.
- Never dress your child in clothes that you would be upset if they got ruined – they do get messy even with all the best intentions in the world!
- They should wear soft soled shoes or trainers to nursery to protect themselves and others from getting hurt and to keep the nursery clean.
- Please bring a draw string bag with a set of spare clothes in case they have an accident or get wet/muddy during the session.
- During the wet autumn and winter months, we advise sensible outer clothing be provided, such as rain macs or waterproof coats for use during outside activities. The children will be going out in all weathers!
- We will also require every child to bring in a named pair of wellington boots as we will be participating in 'Muddy Mondays' which entails going out on the school grounds in all weathers.
- All Glebe logo uniform can be ordered using the order form in your packs and in the Angels uniform shop itself .
- We also do sell a selection of pre-loved uniform. To enquire further about this you can contact the email address found within the brochure.



Milk and Snack

- We are part of the 'Healthy Hillingdon Schools' scheme and provide each child with a piece of fruit. If your child attends all day you may wish to provide a second piece for the afternoon.
- We do not get a choice in which fruit is sent to us so if your child is fussy, please feel free to send in your own for them.
- Please note that only fruit is allowed – **No** cereal bars, crisps, yoghurts etc.
- Please make us aware straight away if your child has any allergies.
- The school will provide free cows milk for your child up until they are 5 via the schools milk scheme. You do not have to sign up for this as this will be provided automatically. However, if you wish to opt out please do so by contacting the company on the number provided in your packs and let the staff know too.

Bits and Bobs

- Please be aware that we have no designated nappy changing room within the nursery, so please, where possible, try to ensure your child is fully toilet trained before starting Glebe. If they do still require pull ups please provide us with wipes, nappy bags and spare pull ups as we cannot provide these.
- Named spare clothing in case of accidents.

Bits and Bobs part 2!

- If your child has sickness or a stomach bug please be advised that they are not allowed to attend nursery for at least 24 hours after their last episode. This will sometimes be increased to 48hrs if the bug is prevalent.
- Please ensure any prescribed medications are brought in on the child's first morning. Named and with dosage instructions.
- Please ensure the school has all up to date contact details in case of illness or emergencies.
- We believe strongly in parent partnership and always welcome a heads up if your child is needing a little extra TLC.
- Please return the starting points information. (this is separate to the 'All about Me' books as it contains information that the office needs)
- It would be really useful if you could purchase a school book bag for your child. These can be purchased via our "IRIS ParentMail" payment system.

Thank you for reading

- Any questions?
- If you need any further clarification on any of the information shared today please feel free to contact any member of the nursery staff or myself and we will be happy to help.

Miss Wands

