



# GLEBE

## GLEBE PARENT NEWSLETTER



I hope you have all had a good week.

### Weekly Attendance

2G	98.7%
4J	97.9%
4JL	97.8%
1A	97.7%
2L	97.3%
1C	97.3%
2F	97%
3V	97%
RP	96.9%
6C	96.2%
4R	95.4%
5I	95.4%
1S	94.3%
RW	93.5%
5G	93.5%
6K	93.4%
3ME	92.6%
3A	91.9%
5V	91.1%
4J	87.9%
RB	85.7%

### Breakfast Club

We have made the difficult decision to raise our fees for Breakfast Club from September. This is due to the steep rise in food costs, energy costs as well as staffing costs.

We will be increasing the daily charge to £4.50. We have assessed this cost against other local primary schools and we are still cheaper than 3/4 of the schools who offer breakfast club provision.

The fees for Breakfast Club have always just covered our costs and in the last year, we have had to fund this from other parts of the school budget so we have had no option but to introduce this increase.



Whole School

# 94.1%

FRIDAY 30TH JUNE 2023

# CLASS & TEACHER ALLOCATION FOR 23 -24

Class Name	Teacher/s	Current Class
Nursery	Miss Wands (EYFS Phase Leader)	
RB	Mrs Bhardwaj (Year Group Leader)	
RP	Mrs Pione	
RSG	Miss Rock-Simmons (Mon – Wed) Miss Griffiths (Thu – Fri)	
1L	Miss Lubbers (Year Group Leader)	RB
1A	Miss Arshad	RW
1C	Mr Curd	RP
2S	Mrs Sheehan (KS1 Phase Leader)	1A
2WG	Miss Warner (until Feb. '24) Miss Gilbert (from Feb. 24)	1C
2M	Miss Mogan	1S
3R	Mr Rademacher (KS2 Phase Leader)	2L
3V	Miss Vasarhelyi	2G
3ME	Mrs Mountain (Mon – Wed) Mrs Everett (Thu – Fri)	2F
4JL	Mrs Jayasekera (Year Group Lead) (Mon – Wed) Mrs Lenk-Sohun (Thu – Fri)	3V
4J	Mrs Jan	3A
4C	Mr Conibeere	3ME
5G	Miss Gordon (Year Group Leader)	4R
5I	Miss Islam	4JL
5V	Mr Vandorpe	4J
6L	Mrs Long (Year Group Leader)	5G
6K	Miss KIELTY	5I
6A	Mrs Akhter	5V

# HIGHLIGHTS

## Mayor's Community Weekend 2023

The first ever Mayor's Community Weekend took place across London on the weekend of Friday 23rd June to Sunday 25th June 2023.

As part of the event, communities and groups were offered the chance to apply for some funding to run activities that celebrate and support building strong community relationships. We ran a 'Growing Community roots' project with children from our Military Families and residents from Parkfield Residential Care Home.

We celebrated our 'Growing Community Roots' project on Friday afternoon and were lucky enough to be joined by our friends from Parkfield, Pauline Thomson from RAF Northolt and some other special guests including Debbie Weekes-Bernard - London's Deputy Mayor for Communities & Social Justice and Phil Chamberlain- England Director for The National Lottery Community Fund.

As well as taking part in some drama and art activities together, we shared the gifts we had all been busy creating since April. It was a brilliant afternoon and another opportunity to work across the generations and engage with our wonderful local community.



# HIGHLIGHTS

## Multi-Cultural Evening





# HIGHLIGHTS

## Year 1 Trip to the Science Museum

Year 1 were very excited to visit the Science Museum on Monday. The excitement began with the trip on the train and we were really impressed by how sensible the children were. We visited the Space gallery and saw lots of interesting objects, even the module that Tim Peake returned to Earth in!

Year 1 also visited 'The Garden', which was full of objects that had all our senses working hard. We then visited the Secret Life of the Home exhibition to see how all the objects we are used to like televisions and phones have changed over the years.

Once again we were really grateful to all our parent helpers for their time. Year 1 represented Glebe really well.



## PROUD PARAGRAPH

### Year 1 Phonics Screening Check

Two weeks ago I shared that the year 1 children had performed brilliantly in their phonics screening check. We have now had the pass mark confirmed so I can report that **93%** of the children passed the check. With **65%** of them achieving full marks and **78%** scoring 39 or 40 out of 40. An exceptional achievement!



# HIGHLIGHTS

## Year 4 Trip to the Battle of Britain Bunker

On Tuesday, two of the year 4 classes went on an extremely exciting school trip! We visited the Battle of Britain Bunker!

Firstly we met our host, who explained our day in great detail. After she described our visit, we headed off to the classroom, where she taught us about the bunker. We did a few quizzes then the adventure began.

She gave straightforward instructions then we travelled down the stairs to the bunker.

Surprisingly, everything looked as good as new. The plotting table looked fresh and polished (although the lights were slightly dirty!). She told us about the hostile and friendly plotters and taught us about the bright lights on the wall.

We strolled up a few stairs and discovered the controllers compartment. We even saw where Winston Churchill sat! After that we had lunch and discussed the morning where we had had so much fun! We then went to the museum and tested the old telephones. We even tried on a few costumes! Then we paced up the flight of stairs and sketched in detail, some planes.

We had an amazing day where we discovered what it was like to live through World War 2.

By Leia in 4J

A photograph of two young children in a field of yellow flowers. One child is wearing a magnifying glass and looking at a flower, while the other is holding a flower and looking at it closely.

# HIGHLIGHTS

## Perform4All Visit

We were very pleased to receive a visit from Perform on Thursday 29th June. The children had a wonderful time exploring the theme of Around The World and using drama, dance and singing to help develop their confidence, concentration and social skills.

To complement the workshop, there is a free educational app for iPhones and iPads based around the theme of Around The World. It contains fun games, creative tasks and videos of the themed songs and dances. Click here to download it free or here to find out more about the Around The World theme.

Perform run regular weekly classes in the local area and they are offering a special introductory discount to all parents of Glebe Primary School if they come along for a free trial session before Thursday 20th July.

To claim your discount, just call Perform on 020 7255 9120 quoting GLEB200723 or book online at [perform.org.uk](http://perform.org.uk).

# HIGHLIGHTS

## Reading Explorers

This week, Miss Quirk, Mrs Sheldon and Mrs Godfrey took their reading group to the library.

At the library the children designed their own Top Trump cards. They had some amazing Footballers, Pokémon characters and some of the children even made up their own monsters.

The children had to think up their own skills and special powers that their character possessed.

They had a really good afternoon and are looking forward to their last visit this term in 2 weeks.

The children were very well behaved even though it was very humid and they even managed to avoid the rain.



# HIGHLIGHTS

## EYFS Sports Day

Thankfully, we had a much cooler morning on Monday for our EYFS sports day.

The children gave it their all and I was so impressed with how well the Nursery children, in particular, stayed in their lanes during the races!

The breeze did make the throwing events a bit trickier but the children didn't let this faze them.

A huge thank you to the students at Salvatorian College who ran the events, our own older pupils who helped them and to the PSD staff who were excellent over all 4 days in ensuring the events ran smoothly.

# UPDATE

**THE  
WEEKLY  
WINNERS  
ARE...**

**EdShed** 

  
**doodlemaths**

**Spelling Shed**  
3V | 5G

**Doodlemaths**  
3V | 5V

# REMEMBER



## Key Information & Dates

### Key Dates



\* *new information*

Monday 3rd July: Year 6 performance of High School Musical - 9.15am

Year 6 performance of High School Musical - 2.00pm

Tuesday 4th July: Meet the Teacher (in school - children only)

Open Evening - 5 - 7pm

Wednesday 5th July: Year 6 performance of High School Musical - 6.30pm

Thursday 6th July: Year 6 performance of High School Musical - 2.00pm

**Friday 7th July: RSPCA Day - wear something animal-related & bring in £1**

Saturday 8th July: Glebe Summer Fete

~~~~~

Monday 10th - Friday 14th July: Year 6 School Journey/Activity Week

~~~~~

Tuesday 18th July: 1st Reception class going to Ruislip Woods (pm)

Wednesday 19th July: 2nd & 3rd Reception class going to Ruislip Woods

Friday 21st July: Year 6 Leavers' Assembly - 9.15am

**School closes 1 hour earlier for summer break**

---

### Requests for Special Leave of Absence

The London Borough of Hillingdon have introduced new procedures for requesting special leave of absence during term time that will come into effect from September.

From September you will need to complete a request form (available on our website) rather than write a letter or email the school requesting leave. It is expected that the form is completed and returned to school **no less than 4 weeks before the planned absence**. You are also informed not to book a term time holiday until you know the school will authorise your child's absence.

Holidays will only be authorised in exceptional circumstances - please note: financial pressures/cost of living crisis are **not** considered exceptional.

Unauthorised holidays or absence may lead to the issue of a Penalty Notice or a Summons for irregular school attendance.

---

### Parent/Carer Workshops

Our next Inclusion Department workshops are:

Tuesday 26th September 2023 9:00am

How can parents help their child with their learning?

Thursday 16th November 2023 2:15pm

How to manage challenging behaviour effectively.

Please email [sen@glebeprimary.org](mailto:sen@glebeprimary.org) to book your place.



### Inclusion



A Message from the Glebe School Pupil Council

Don't forget, School Council have organised an RSPCA fundraising day on Friday 7th July.

They would like the children to come to school wearing something animal related, such as animal print, animal ears or anything else they can think of.

However, this does not include a full costume or face paint.

The children can also bring in £1 to donate to the RSPCA.

RSPCA DAY –  
07.07.2023



GLEBE PRIMARY SCHOOL'S  
 SUMMER FETE  
 RAFFLE  
 £1 PER TICKET



£150 Home Bar Voucher

£100 M&S Voucher

£50 Amazon Vouchers donated by Lakin

£50 Amazon Vouchers donated by Lakin

£50 Voucher Miller & Carter

£50 Tesco Voucher

Roberts Revival Uno BT Radio

Velocity Paintball for 10 People x2

1 Week Summer Sports Camp CP Soccer

Bucks Rail Family Steaming Day Ticket

David Lloyd Guest Passes for 2

Harrow Wall Kids Krazy climb for 2

HoneyBees Afternoon Tea

Clay shooting voucher for 2 – Holland & Holland

Angels Uniform – Vouchers £20

Angels Uniform – Vouchers £20

Hamper donated by Becspoke

4 classes with CL Fitness

PT Session with CL Fitness

2 Tickets at The Comedy Bunker

Granero Lounge £30 Voucher

Hawkins Back to school bundle

Compass Theatre Dick Whittington 4 Panto Tickets

Floral Bouquet Donated by Untamed Blooms

Ninja Warrior Voucher

Odds Farm Family Ticket

Parents Paradise £20 Voucher

One Term Free classes at Premierki Taekwando

Rush High Wycombe Jump session for 2

Smiths Garden Centre £25 Voucher

Wine Donated by W Sherry Funeral Directors x4

Free MOT valid for 1 Year at Eastglade Motors

Uxbridge golf club 3 Course Cavary Meal for 4 people

Chocolate Set Donated by Co-Op

Wine donated by Co-Op

Prezzo £30 Voucher

Nona Rose £40 Voucher

Gift Hamper Donated by Scentsational flowers

Miraculous Cakes 12 Cupcakes Voucher

Hamper donated by Swallow Glazing

Pop Golf Wembley Game for 4 people

Cut & Blow Dry at Naz Ladies Salon

One free session at Buzz Bounce

Everyone Active Ice Skating Family Voucher

Everyone Active Clip n Climb Family Voucher

Hobbledown Heath Admission for 4

HOB Salon £25 Voucher

Floral Bouquet Donated by Cara McCallam



TO BE SOLD EVERY TUESDAY & FRIDAY FROM 20TH JUNE

8.40AM –9.00AM AT THE MAIN SCHOOL GATE

TICKETS ALSO AVAILABLE ON THE DAY

DRAW TO TAKE PLACE SATURDAY 8TH JULY 3.30pm



Friends of Glebe Primary School • Registered Charity 1051677 • [friendsofglebe@outlook.com](mailto:friendsofglebe@outlook.com)



Do you have any pre-loved toys looking for a new home?

\*toys, games, soft toys etc.

If so, please donate them to the teddy tombola and bric-brac stall at our summer fete!

There is a donation box outside the main office.

Thank you!



# Glebe Primary School's

# SUMMER FETE

Saturday 8th July  
12-4pm

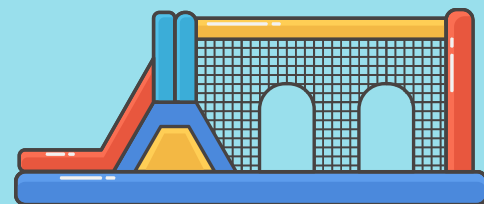
TICKETS £1\*

JOIN US FOR LOTS OF FUN!

Bring your picnic blanket and join us for a fun day

- bouncy castles •
- assault course •
- giant slide •
- penalty shootout •
- face painting •
- tug of war •
- entertainment •
- The FoG Inn •
- market stalls •
- yummy food vans •
- and much more!

\*£1 in advance,  
£2 on the door  
3 and under free,  
but still require a  
ticket



Tickets available from school gate every  
Tuesday & Friday morning from 20th June OR  
[pta-events.co.uk/glebeprimaryickenham](http://pta-events.co.uk/glebeprimaryickenham)\*



\*booking fees apply

# Nursery



We made dinosaur fossils



## Deadly Dinosaurs



Heaviest

Lightest

In maths we looked at weight



Junk modelling



We found lots of interesting facts in a variety of nonfiction books.



We made a dinosaur swamp



PIC COLLAGE

PIC COLLAGE

# Reception



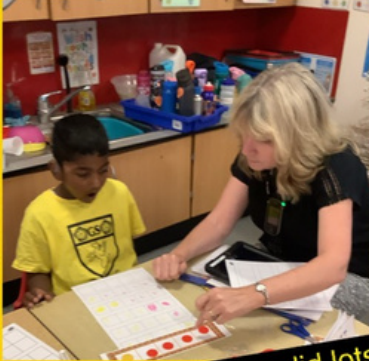
Drama workshop



Sports day



This week in Reception...



We did lots of maths work



All the children tried their best, it was a great day!



Counting



We also learned about the Gingerbread man and made our own gingerbread men in the sand



Number bonds



Goldilocks and the three bears

# Year 1



# Year 2



Drama workshop



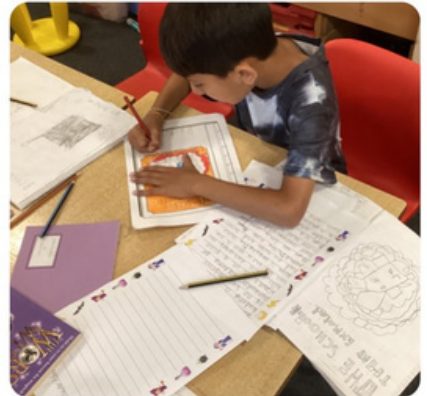
Mexico Day



Witch stories

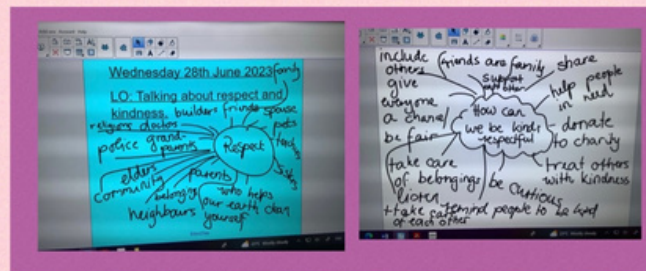


Maths



# Year 3

*In PSHE, we discussed ways we can be respectful.*



*Observations in science*



PIC • COLLAGE

# Year 4

## Year 4's trip to the Battle of Britain Bunker





# Year 6



**BRIDGE BUILDING**



**COMPETITION**





I hope our families who  
celebrated Eid-ul-Adha on  
Wednesday had a lovely  
day.

I wish you all an enjoyable  
weekend.

Mrs Penney

---



GLEBE  
WEEKLY  
SCHOOL  
NEWS