



GLEBE

GLEBE PARENT NEWSLETTER



I hope you have all had a good week.

Parent Parking Permits

The online school permit application system will be going live shortly. We are the only school in the London Borough of Hillingdon who has restricted allocation due to local residents' objections. Therefore, we are only allocated 80 permits per year.

Our criterion remains the same as in previous years – by distance of the child's primary residence to school. For reference, due to high demand last year, the cut off was homes within a 2-mile radius so if your residence is closer than that, you will not be allocated a permit.

I will notify you when the online application system for September 2023-July 2024 goes live.

Weekly Attendance

5I	100%
5G	99.5%
1A	99.2%
6C	98.6%
RW	98.1%
6K	97.8%
2L	97.5%
4J	97.4%
4R	96.6%
1S	96.3%
2G	95.4%
6L	95.1%
1C	94.6%
5V	94.5%
3ME	94.4%
RP	93.8%
3V	93.5%
4JL	93.5%
2F	91.7%
3A	90.3%
RB	88.9%



FRIDAY 7TH JULY 2023

Whole School
95.6%

HIGHLIGHTS

Year 6 Performance of High School Musical

Over 4 performances this week, the children in year 6 showcased their wide-ranging talents. The singing, acting, dancing and sheer confidence on display was outstanding.

Several of the children opted to work 'backstage' and covered the roles of lighting and sound technicians as well as props and stage management.

The staff had cast two sets of main roles so that more children were able to have key roles.

I was blown away by the level of talent shown by the children and how children who started Glebe as shy, introverted individuals had the confidence to sing solos, dance or act in such a large and ambitious production. Some even attempted - and pulled off - American accents!

A huge thank you and well done to Mrs Long, Miss Kielty, Miss Warner, Miss Duhamel and Mrs Lonsbrough for putting on such a fantastic show and to Mrs Millington for her wonderful set design.

HIGHLIGHTS

RSPCA Day

It was so lovely to see the imaginative animal props/outfits that the children wore today. Some were more tenuous than others (a fair bit of Puma merch on display!) with a couple of staff members even trying to convince me that the mythical creature Pegasus - which is on the school logo - was a legitimate animal!



The children attended assemblies where they learned about how to look after animals, the work of the RSPCA and when to contact them if they are worried for the safety or welfare of an animal.

The children also completed some animal related activities in class. Thank you to everyone who donated £1 for the RSPCA.

The total raised will be shared in next week's edition of the newsletter.



HIGHLIGHTS

The Natalie Ross Award

You may remember that we introduced this award last year in memory of Natalie Ross, one of our school Governors. The award is given to a pupil who has overcome exceptional difficulties or barriers to their learning.

This year's recipient of the Natalie Ross Award is **Samer Arman** who is part of our SRP. When Samer came to Glebe at the end of year 1, he had only just been fitted with his cochlear implants and he was in the very early stages of verbal communication.

Samer has made exceptional progress since then, due to sheer determination and hard work. He is an incredible role model for all of the children, but particularly his deaf peers who all look up to him as an inspiration for what can be achieved.

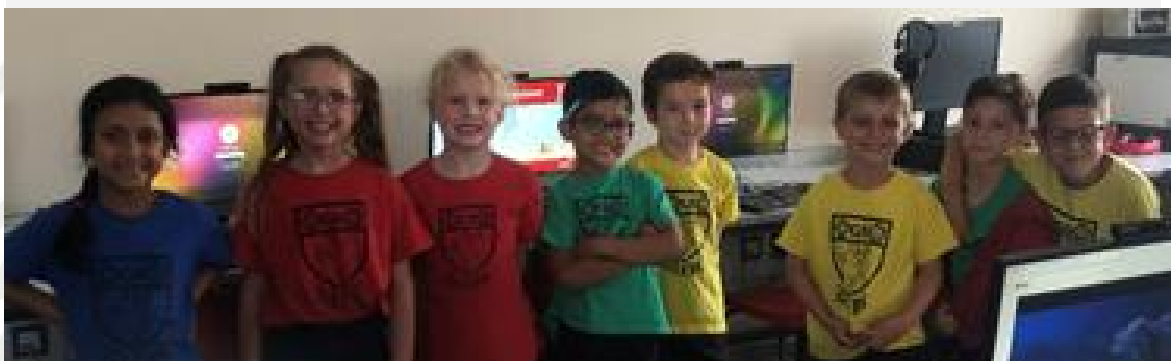


HIGHLIGHTS

Rainbow Boosters

On the 27th June, as part of the project launch in a small rural village in Pune India, the Rainbow Boosters team, led by Pritesh Chauhan (father to Rayan Chauhan in 1S), opened a fully equipped computer lab for the 180 students to give them the all-important connectivity they need in a digital world. You can see the lab in this video - <https://youtu.be/1rXtKspk3jU>

As part of that launch day, there was a special workshop where the first students of the new lab in India, connected across continents to our ICT suite and spoke to eight of our Year 1 students.



A huge well done to Arlo Kataria, Freya Linscott, Bodhi Parmar, Freya Scourfield, Masato Takizawa-Jowett, Joshua De Vere, Saanvi Patel and Rayan Chauhan for taking part and bringing lots of life and energy to the workshop.





HIGHLIGHTS

Rainbow Boosters

The event was made possible through the magic of technology, as both sets of students were able to interact and converse with each other via Zoom.

Despite the physical distance between them, these young minds found common ground and shared aspects of their lives that gave them an insight into a different culture, first-hand. And like any Zoom call, some had some technical difficulties too!

A message from Mr Chauhan, founder of Rainbow Boosters:

It is essential to mention that the Rainbow Boosters project, of which this workshop was a part, promotes conscious giving.

While donations supported the necessary infrastructure in the rural village's computer lab, the true essence lay in the time and engagement invested by both sets of students. Through genuine interactions, an invaluable cultural exchange occurred, enriching the lives of all participants.

REMEMBER



Key Information & Dates

Key Dates



Saturday 8th July: Glebe Summer Fete

~~~~~

Monday 10th - Friday 14th July: Year 6 School Journey/Activity Week

~~~~~

Tuesday 18th July: RB going to Ruislip Woods (pm)

Wednesday 19th July: RW and RP going to Ruislip Woods (am and pm respectively)

Friday 21st July: Year 6 Leavers' Assembly - 9.15am

Picnic lunch on the field - no hot meals available (packed lunch option from The Pantry or packed lunch from home only)

School closes 1 hour earlier for summer break

Requests for Special Leave of Absence

As I mentioned in last week's newsletter, The London Borough of Hillingdon have introduced new procedures for requesting special leave of absence during term time that will come into effect from September.

Please note: this does not include requests for absence for taking external exams, e.g. music, dance or entrance exams. We will still accept emails or letters for these absences.

However, for all other requests, you will need to complete a request form (available on our website) rather than write a letter or email the school requesting leave. It is expected that the form is completed and returned to school **no less than 4 weeks before** the planned absence. You are also informed not to book a term time holiday until you know the school will authorise your child's absence.

Holidays will only be authorised in exceptional circumstances - please note: financial pressures/cost of living crisis are not considered exceptional.

Unauthorised holidays or absence may lead to the issue of a Penalty Notice or a Summons for irregular school attendance.

Please note: from September we will not be able to consider requests for extended absence that are not on the correct form - emails and letters will not be accepted. Additionally, requests that are received within 4 weeks of the planned absence will also not be considered and will automatically be refused unless there are exceptional circumstances for the short notice.

Parent/Carer Workshops

Our next Inclusion Department workshops are:

Tuesday 26th September 2023 9:00am

How can parents help their child with their learning?

Thursday 16th November 2023 2:15pm

How to manage challenging behaviour effectively.

Please email sen@glebeprimary.org to book your place.

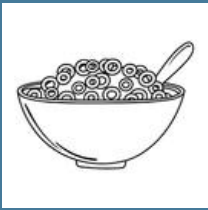
Inclusion



REMEMBER



Key Information & Dates



Breakfast Club

Please don't forget that if you use our Breakfast Club provision that the daily rate will increase to £4.50 from September.

You will still be able to book and pay in the same way as before, it is only the cost that will be changing.



SEN Support Plans

If your child is on the SEND register, their updated SEN support plan will be sent home via 'pupil post' on Tuesday 11th July. If your child is in year 6 or 3A, they will receive it today due to the teachers of these classes accompanying the year 6 residential trip next week.

UPDATE

**THE WEEKLY
WINNERS
ARE...**

EdShed 



Spelling Shed
3V | 5G

Doodlemaths
RW | 5V



Join Ready Set Read!, the Summer Reading Challenge 2023, for free in all Hillingdon Libraries from Saturday 8th July for ages 4–11.

Children are encouraged to borrow books across the summer holidays and they will receive some great incentives such as posters, stickers, bookmarks and games*. Children who complete all four visits will receive a medal* and certificate!

Don't forget to check out our free events running across the library service this Summer including our new LEGO Education SPIKETM Essentials events.

www.hillingdon.gov.uk/summer-reading

*While stocks last

Glebe Primary School's

SUMMER FETE

Saturday 8th July
12-4pm

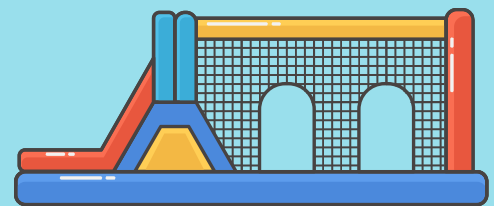
TICKETS £1 *

JOIN US FOR LOTS OF FUN!

- bouncy castles •
- assault course •
- giant slide •
- penalty shootout •
- face painting •
- tug of war •
- entertainment •
- The FoG Inn •
- market stalls •
- yummy food vans •
- and much more!

Bring your
picnic blanket
and join us for
a fun day

*£1 in advance,
£2 on the door
3 and under free,
but still require a
ticket



Tickets available from school gate every
Tuesday & Friday morning from 20th June OR
pta-events.co.uk/glebeprimaryickenham *

*booking fees apply



Nursery



During 'Muddy Mondays' we spotted some Sunflowers and Sugar Snap Peas growing.



We rescued dinosaurs from ice.



We used a variety of materials to create dinosaur scenes.



We painted the letters in our name.

In maths we talked about 'Distance'

Far

Near

Dinosaur Week 2

PIC•COLLAGE

Reception



Year 1



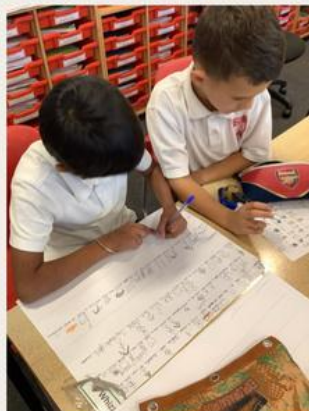
Year 2



Year 3



*In English, we
have been
reading the
'Egyptian
Cinderella'.*



*Learning
the times
tables in
maths!*



PIC•COLLAGE

Year 4



YEAR 5

**WE CREATED POSTERS ABOUT
THE SOLAR SYSTEM IN SCIENCE**



Year 6



HIGH SCHOOL MUSICAL





I wish you all an enjoyable
weekend and look forward
to seeing many of you at
the summer fayre
tomorrow.

Mrs Penney



GLEBE
WEEKLY
SCHOOL
NEWS