



# GLEBE

## GLEBE PARENT NEWSLETTER



I hope you have all had a good week.



Our Reception large play and climbing equipment has been condemned. We are looking to replace it and have ringfenced some money from the school's budget and are looking to secure funding to help us with the total amount.

The biggest cost by far, though, is not the equipment itself but the safety floor surface which we have been quoted costs in the region of £33,000. A bark surface is much cheaper but some children can be allergic to it so we would prefer a spongier surface like those in public parks.

You'll be relieved to hear that we are not asking you for the money but if you work for a company (or knows someone who does) who would like to contribute to the community and cover all or some of the cost or could actually provide the surface at a reduced rate, please can you get in touch?

Thank you



### Weekly Attendance %

RP	100
6K	100
4V	99.7
3G	99.3
3D	99.3
4W	99.3
6L	99.3
5I	98.7
5IP	98.3
1M	97.3
1S	97.2
2F	97.1
RW	96.8
5M	96.7
2C	96.4
RB	95.9
6A	95.6
1G	95.2
2J	95.2
3ME	94.7
4JL	94

### Whole School

# 97%

FRIDAY 20TH SEPTEMBER 2024

# Updates



## **Meet the Team and Q&A Session for Parents**

I have invited PSD to speak to parents regarding the after school club and holiday club provision they will be taking over in January 2025.

I hope that by giving the parents who use this facility the opportunity to meet the team, hear their plans and ask them questions, you will all have a better understanding of what is on offer.

The meeting will be held in the school hall on **Tuesday 22nd October at 5.30pm** (during our Parent Consultation Evening). We hope by arranging it for this night, many of you will be here anyway and you can arrange your appointments with your child's teacher around this time.



## **Parking - A Not-So-Good News Story.**

Many of you may have seen the police during pick up time on Wednesday afternoon. When I spoke to them, the two officers said they came following a number of reports and complaints made by residents and parents regarding anti-social driving, parking and general behaviour from some Glebe parents.

There will be an increased police presence for the time being and they have assured me they will act on any reports of incidents on the days they are not here. They have provided me with contact details to report individuals who are driving or parking illegally or dangerously. If you witness this, please send me a photograph of the vehicle, with a clear view of the registration plates in clear view and I can send this directly to the police.

# Updates

## Prefects 2024-25

Our Prefects for this year are:

**Rutvi (Head Girl)**

Shivanshi

Ahathya

Zeynab

Neal

Jemima

Sadaf

Freya

Greta

Dorrie

Indy

Jonathan

**Daniel (Head Boy)**

Ahathya

Teddy

Luke

Kyan

Saleem

Leia

Maeya

Anais

Amira

Amelia

Isaac

Jack

George

---

## House Captains 2024-25

### **Swakeleys**

**House Captain: Diya**

**Vice House Captain: Blake**

### **Burnham**

**House Captain: Charlotte**

**Vice House Captain: William**

### **Tavistock**

**House Captain: Ethan**

**Vice House Captain: Myla M**

### **Sussex**

**House Captain: Elliot**

**Vice House Captain: Callum**

# REMEMBER



## Key Information & Dates



### Autumn Term - 2024

Thursday 26th September - 5I Class Assembly at 9.15am - parking on playground from 9.05 but not before for health and safety reasons

Monday 7th October - Year 4 Harvest production at 9.15am - no parking available on site

Tuesday 8th October - Year 4 Harvest production at 2pm - no parking available on site

Wednesday 9th October - Year 4 Harvest production at 6.30pm - no parking available on site

Tuesday 22nd October - Parent Consultation Evening from 4pm- 7pm

Thursday 24th October - 5M Class Assembly at 9.15am - parking on playground from 9.05 but not before for health and safety reasons

- Parent Consultation Evening from 4.30pm- 7.30pm

### *Half Term: Monday 28th October - Friday 1st November*

**Monday 4th November - children return to school: NO TRAINING DAY**

Thursday 7th November - 5IP Class Assembly at 9.15am - parking on playground from 9.05 but not before for health and safety reasons

**Thursday 28th and Friday 29th November - Staff Training Days - school closed to all pupils**

### Advanced Notice

**Tuesday 3rd, Wednesday 4th and Thursday 5th December - Nursery and Year 2 Christmas performances times to follow.**

# REMEMBER



## Key Information & Dates



### School Queries/Questions

We have noticed a recent spate of parents contacting the school to ask a question, getting a response but later going to a different member of staff to ask the same question, presumably hoping to get an answer more akin to what they want the answer to be.

My staff are really good at referring any questions to the person best placed to answer it. If they are able to answer your question directly, it will be that the answer is school policy and therefore unlikely to change dependent on who you ask.

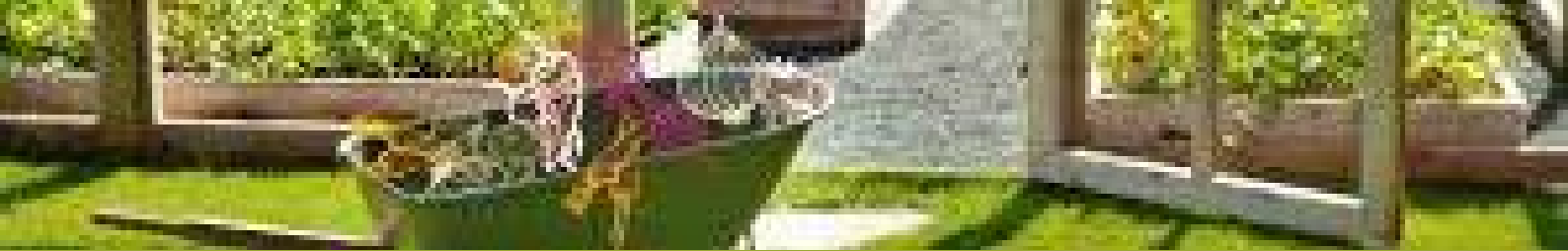


### House Point Reward

If your child is in Tavistock house, they are owed a reward day from the last academic year. Tavistock won the termly House Point count.

Therefore, as a reward children in **Tavistock only** (the green house) will have a **non-uniform day** on **Friday 25th October** - the day we break up for half term.





# Curd Corner

Thank you to everyone who has shown interest in Gardening Club. The club will resume soon and continue until the end of this half term. We won't be adding any new members this term as it will only be on for a few weeks but there will be new spaces available when we restart again after the Easter holidays.

More details will be sent out nearer the time.



doodlemaths



This week's winners are

3ME

4W

# INTRODUCING **CashPOT** **FOR SCHOOLS**

Download and opt-in with Asda Rewards  
and we will donate ££s to schools.



1. Download and sign-up to the Asda Rewards app (if you don't have it already)
2. Open the Cashpot for Schools missions & select your primary school
3. Scans your app every time you pay for your Asda shop
4. 0.5% of your total basket spend will be automatically donated to the selected primary school by Asda
5. AND you still continue to build your own Cashpot as normal, so it's a win win!





# SCHOOL FUNDRAISING



More clothes -  
more funds for  
your organisation.  
1 kg = £0.55

YOUR COLLECTION IS  
ARRANGED ON:

**Thursday 3rd October**

FILL ANY BAGS WITH CLOTHING AND  
BRING THEM TO SCHOOL/ORGANISATION  
WE WILL COLLECT AND WEIGH THEM

WE ACCEPT

- Good quality clean clothing (adult's, children's, baby)
- Shoes (paired)
- Bags
- Hats & scarves
- Belts
- Fashion accessories
- Swimwear, lingerie
- Jewellery
- Perfumes

WE DON'T ACCEPT

- Uniforms
- Dirty, wet, ripped, damaged clothing
- Traditional clothing
- Duvets & pillows
- Single shoes
- Toys, stationery
- Bric-a-brac & electrical items
- Books, CDs, DVDs
- Workwear
- Carpets, rugs, mats, curtains
- Hygiene items, diapers
- Linen & towels

PLEASE NO UNIFORMS & DUVETS!

RAISE MONEY FOR YOUR SCHOOL BY GIVING  
AWAY YOUR UNWANTED CLOTHES

**Please do not bring bags to school until Thursday 3rd October!**





# GARY BARLOW

## Tribute

JOIN US FOR A NIGHT OF SINGING AND DANCING WITH JON FISHER AS GARY BARLOW!

SINGING ALL THE TAKE THAT CLASSICS AS WELL AS MANY MORE COVERS THAT WILL GET YOU ON THE DANCE FLOOR



7:30  
PM

11TH  
OCTOBER

£15\*



*Glass of Prosecco (or soft drink) on arrival*

GLEBE PRIMARY SCHOOL  
SUSSEX ROAD, UB10 8HP

See Jon in action on his instagram:  
@jonfisherasgarybarlow

Tickets available from:  
[www.pta-events.co.uk/glebeprimaryickenham](http://www.pta-events.co.uk/glebeprimaryickenham)

\*booking fees apply



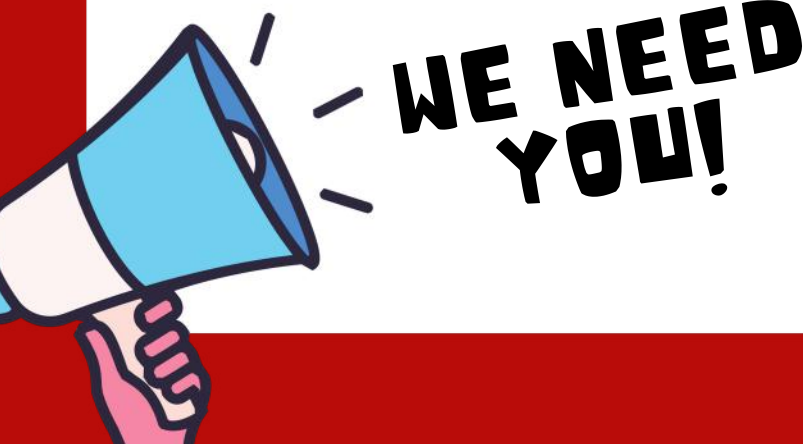
# AGM

MONDAY 18TH NOVEMBER

6:30PM  
SCHOOL HALL

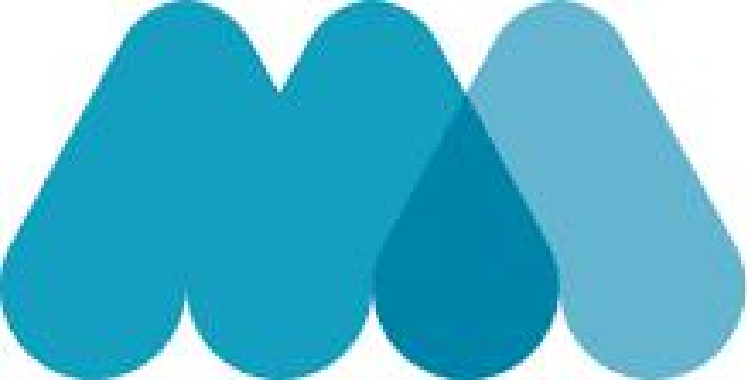
Friends of Glebe is the school's Parent Teacher Association, we organise fun events and fundraisers throughout the year. All proceeds go towards the school.

Please come along to find out more about FoG and how you can get involved.



JOIN US ON FACEBOOK  
FOR OUR LATEST UPDATES





**MISCARRIAGE  
ASSOCIATION**

The knowledge to help

**My name is Kyesha, I am Klay (1S) and Kane's  
(Nursery) mum.**

**I am running the London marathon in April  
for the miscarriage association and I have  
been given the task of fundraising some  
money.**

**Please visit my Just Giving page as any  
support would be massively appreciated!**

**[https://www.justgiving.com/page/kyesha-  
mansfield-1721681131217](https://www.justgiving.com/page/kyesha-mansfield-1721681131217)**





# NURSERY



# HIGHLIGHTS



# RECEPTION

Reception have enjoyed counting accurately, learning a new story and enjoying our outdoor learning environment.



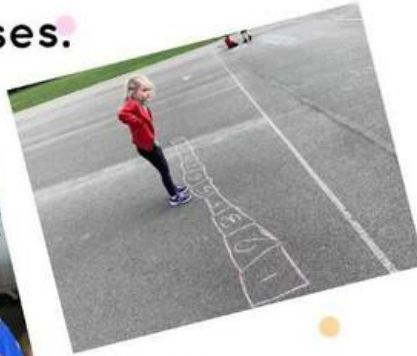
PIC•COLLAGE

# HIGHLIGHTS



# YEAR 1

In Science we have been exploring our senses.



In Maths we have been drawing number tracks.



In Computing we practised using the mouse.



PIC•COLLAGE

# HIGHLIGHTS



# YEAR 2



Year 2 have  
been acting as  
nurses!



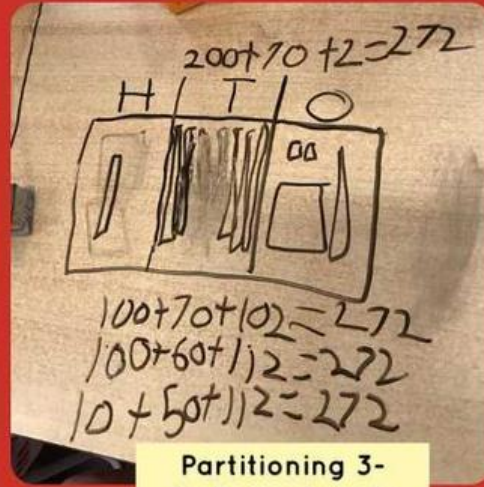
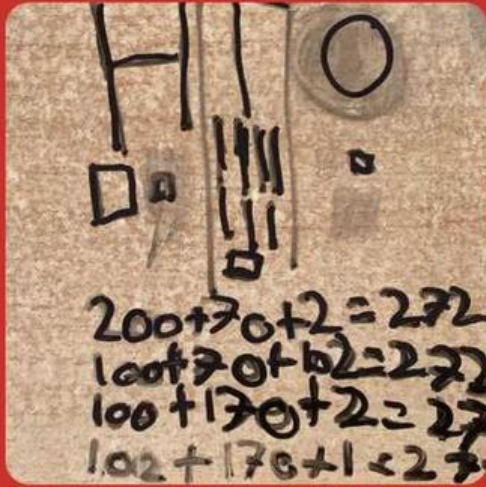
PIC•COLLAGE



# HIGHLIGHTS



# YEAR 3



Partitioning 3-digit numbers in various ways.



Playing rounders in PE.



Investigating shadows in science.



Acting out our story in English.

# HIGHLIGHTS



# YEAR 4



Year 4 rapping  
the Iron Man



HIGHLIGHTS



# YEAR 5



YEAR 5

IN SCIENCE,  
WE WERE LOOKING AT THE  
DIFFERENT PARTS OF A FLOWER



# HIGHLIGHTS

# YEAR 6



YEAR 6  
HAVE BEEN  
THROWING  
SHAPES IN  
GYMNASTICS



PIC•COLLAGE

# HIGHLIGHTS



Wishing you all a  
lovely weekend.

Mrs Penney



GLEBE  
WEEKLY  
SCHOOL  
NEWS