



GLEBE

GLEBE PARENT NEWSLETTER



I hope you have all had a good week.

Phase Monitoring

As we are now a few weeks into the new school year, we have resumed our half termly monitoring of the standards of teaching and learning around school. This week we began with upper KS2 (years 5 and 6).

Our Phase Monitoring exercise (in the style of a mini-Ofsted inspection) involves visiting lessons, scrutinising the planning, pupils' work and interviewing the children about their learning. We have been using this system for over 7 years now and we find that by focusing on a phase at a time, we can really pinpoint the strengths and areas that we need to develop in each year group and set targets to help achieve the development points as soon as possible. We will review the progress of the phases towards their targets after half term. We monitor and review each phase once per half term. If you have a child in Year 5 or 6 you will be pleased to hear that the children's behaviour for learning was excellent and they worked very hard in all lessons observed.

Next week it's the turn of lower KS2 (years 3 & 4).



Weekly Attendance %

1S	100
6L	99.7
3G	99.6
6K	99
3ME	98.7
6A	98.1
2C	97.9
RB	97.7
5I	97.7
1G	97.4
3D	97.3
4W	96.7
RP	96.2
1M	96.2
RW	95.9
2J	95.9
2F	95.7
5M	95.7
4V	95.3
5IP	95
4JL	94.7

Whole School

96.9%

A photograph of two children in a field of yellow flowers. One child is looking through a magnifying glass, and the other is holding a small object. The image is partially obscured by a red banner at the top.

HIGHLIGHTS

Reading Explorers' Library Visit

It was a surprise that the sun was shining on Monday afternoon for our trip to the library after all the rain in the morning. This week the focus was story writing. The children made their own story dice and drew 6 unrelated pictures on the cube. They then had to roll the dice and write a sentence using the picture. They kept rolling the dice, using the picture to write the next sentence, until they had written their own story. All of the adults were very impressed with the ideas that included cars, witches, swimming pools and bonfires. The children showed us a range of styles of writing including a Greek play script and a poem as well as some very funny stories.

Lots of activities are run at Ickenham library, including a free drop-in Lego club every Saturday between 10 and 12 and coding sessions, which can be booked online. More information can be found on all the activities organised over the coming months including half term at:

<https://discover.hillingdon.gov.uk/library-events>

Ms Quirk



HIGHLIGHTS

5I Class Assembly

Yesterday morning, 5I treated us to an excellent class assembly - really setting the bar high as the first assembly of the year!

The children shared their brilliant learning on the Amazon Rainforest and had us laughing from start to finish with plenty of jungle jokes. The children all spoke with clear volume and intonation and it was so lovely to see how they supported one another throughout. They ended the assembly with a lovely tribute to their families for their support and singing 'Stand By Me'.

A huge thank you to Miss Islam, Mrs Longhurst and Miss Richards for putting the assembly and supporting the children.

Miss Imane

SPORTS NEWS

Football

On Wednesday, Mr Young and I took the boys A team to a football cluster at Harlyn. This was a tournament style event, used to seed the teams for the year, where the boys played 5 matches – winning 3 and losing 2. As always, the boys represented the school impeccably; well done to: Fletcher, Ethan, Oscar, Elliot, Harry, Georgie, Harley and Blake.

It was nice to get our first fixture under our belts and we're looking forward to plenty of girls and boys football to come this year.

Mr Dwyer



SPORTS NEWS

Netball

Great start to the netball season. Both teams played incredibly well and came out away with lots of wins, a few draws and a few losses.

We can't wait to see what the season bring us.

Mrs Long



Updates

Play Leaders 2024-25

Aaliyah
Ehsan
Aleena
Hayden
Kalaya
Krish
Omaima
Selma
Marley
Louis
Amelie
Chloe
Riyen
Remee H
Mia

Annie
Dhian
Zonera
Ruby
Kaya
Ishani
Yaseen
Isla
Ivy
Sienna
Nihal
Henry
Anna
Imogen
Lucy
Ava



doodlemaths

This week's
winners are

RW

3ME

REMEMBER



Key Information & Dates



Meet the Team and Q&A Session for Parents

Please don't forget to come to this session on **Tuesday 22nd October at 5.30pm** (during our Parent Consultation Evening) in the school hall.

This will be an opportunity to ask PSD any questions you may have about their provision as well as hearing from them about what they offer.

School Trips

I fully understand that for some parents it can be an anxious experience for children going on school trips, particularly if it is going into London on the tube. However, our staff take their responsibility to the children's safety incredibly seriously and spend a huge amount of time ensuring that these trips go smoothly. The staff accompanying the trip are very experienced and have years of experience running a wide variety of trips. Part of our expectation is that staff visit the trip venue using the planned route prior to writing the risks assessments so they can take note of any potential hazards and plan contingencies. All risk assessments are thoroughly planned between the class teach and Educational Visits Coordinator before these are submitted to me and the trip is finalised.

The vast majority of our parents appreciate the time and effort the staff put into planning these opportunities and respect and trust their professional judgement. Please note, that we cannot accommodate requests from parents to accompany their children unless they have been selected as a volunteer to take a group.



REMEMBER



Key Information & Dates



Autumn Term - 2024

Monday 7th October - Year 4 Harvest production at 9.15am - no parking available on site

Tuesday 8th October - Year 4 Harvest production at 2pm - no parking available on site

Wednesday 9th October - Year 4 Harvest production at 6.30pm - no parking available on site

Tuesday 22nd October - Parent Consultation Evening from 4pm- 7pm
- Meet the PSD Team Q&A at 5.30pm in the school hall

Thursday 24th October - 5M Class Assembly at 9.15am - parking on playground from 9.05 but not before for health and safety reasons
- Parent Consultation Evening from 4.30pm- 7.30pm

Friday 25th October - Non-Uniform Day for children in Tavistock house only

Half Term: Monday 28th October - Friday 1st November

Monday 4th November - children return to school: NO TRAINING DAY

Thursday 7th November - 5IP Class Assembly at 9.15am - parking on playground from 9.05 but not before for health and safety reasons

Thursday 28th and Friday 29th November - Staff Training Days - school closed to all pupils

Advanced Notice

Tuesday 3rd, Wednesday 4th and Thursday 5th December - Nursery and Year 2 Christmas performances times to follow.

What Parents & Educators Need to Know about INSTAGRAM

AGE RESTRICTION
13+

Instagram is a highly popular social media platform with over 2 billion active monthly users. The app is continuously updating and adding new features to meet the wishes of its audience, allowing them to upload images and videos to their Instagram feed, create interactive 'stories', go live, exchange private messages or explore and follow other accounts that catch their eye.

WHAT ARE THE RISKS?

ADDICTION

Many social media platforms, Instagram included, are designed to keep us engaged on them for as long as possible. They encourage scrolling often and scrolling more in case we miss something important – in essence, a fear of missing out. On Instagram, young people can lose track of time when aimlessly scrolling and watching videos posted by friends, acquaintances, influencers and possibly strangers.

UNREALISTIC IDEALS

Children sometimes compare themselves to what they see online: how they look, how they dress, and the way their life is going in comparison to others on social media. However, most people only share the positives about their lives online and many use filters when sharing pictures of themselves. A constant comparison with unrealistic ideals can lead to insecurity over one's own appearance and lifestyle.

GOING LIVE

Livestreaming on Instagram allows users to connect with friends and followers in real time. Risks increase if the account is public, because that means anyone can watch the broadcast, which could result in further contact from strangers. Additional dangers of going live include an impulse to act inappropriately to draw more viewers, as well as being exposed to harmful content or offensive language.

INFLUENCER CULTURE

Social media influencers are sometimes paid thousands of pounds to promote products, services, apps and more. When celebrities or influencers post such content, it often says 'paid partnership' above the post. In April 2024, Ofcom found that over a quarter of children (27%) believed in influencer marketing, accepting their endorsement of products wholeheartedly. So it's perfectly possible for young people to be taken in by this kind of content.

PRODUCT TAGGING

Product tags allow users to tag a product or business in their post. This tag will take viewers directly to the product detail page on the shop where the item can be purchased. Children may also be encouraged by influencers to purchase products that they advertise.

EXCLUSION & OSTRACISM

Youngsters are highly sensitive to feeling excluded, which comes in many forms: not receiving as many 'likes' as expected; not being tagged in a friend's photo; being unfriended; not receiving a comment on their post or a reply to a message they sent. Being excluded online hurts just as much as offline. Young people have reported lower moods and self-esteem when excluded in this way, feeling as if they don't belong and aren't valued.

Advice for Parents & Educators

AVOID GOING PUBLIC

If a young user wants to share their clothing style, make up or similar and use product tagging to show off the items in their post, they may be tempted to change their settings to public. This leaves their profile visible to everyone, which carries the risk of strangers getting in touch with them. Set a child's account to private and explain the importance of keeping it this way.

HAVE AN OPEN DIALOGUE

Talk to children about the positives and negatives of social media, including the risks involved and how they can view or create content safely with family and friends. Explain how safety settings will ensure only followers can view them, and why this is so important. Also, if you find a child continuously uses filters on their photos, ask them why and impress on them that they don't need it.

MANAGE LIKE COUNTS

Due to the potential impact on mental wellbeing, Instagram allows users to hide the total likes on their posts, to prevent people from obsessing over that number in the corner. Users can hide like counts on all the posts in their feed as well as on their own posts. This means others can't see how many likes a person gets. This can be done by going into Settings > Notifications > Posts > Likes > Off.

USE MODERATORS

Instagram Live has implemented a mechanic called 'Moderators', meaning that creators can assign a moderator and give them the power to report comments, remove viewers and remove the ability for certain viewers to comment at all. Consider this if a child in your care wants to go live on the platform. It's also recommended to keep devices in communal spaces so you're aware if a child does go live or watch a livestream.

FOLLOW INFLUENCERS

Following influencers will allow you to monitor what they're sharing as well as being able to discuss anything which you deem inappropriate. Talk to children about who they follow and help them to develop critical thinking skills about what the influencer is trying to do. For example, encourage the child to ask themselves if an influencer is trying to sell them a product when they make a video endorsing it.

BALANCE YOUR TIME

Instagram has a built-in activity dashboard that lets you control how much time is spent on the app. Make sure children sign in to the platform with the correct age, as Instagram's 'Teen Accounts' afford much more control for parents and carers over how long they can use the app each day. Talk with young users about how much time they spend on Instagram and work together to set a healthy time limit.

Meet Our Expert

Dr. Claire Sutherland is an online safety consultant at BCyberAware. She has developed and implemented anti-bullying and cyber safety workshops and policies for schools in Australia and the UK. Claire has written various academic papers and carried out research for the Australian government comparing internet use and sexting behaviours of young people in the UK, USA and Australia.



The National College

The Foghorn



September 2024

WELCOME BACK!

Welcome back to a new school year and a warm hello to all the new parents joining Glebe Primary School. We hope you have all had a lovely summer break.

We are a small group of volunteers who raise funds for our school by organising fun events for our children and their families. We are always looking for more help so if you're interested in joining us please email us at the email address below.

Gary Barlow Tribute Night

On Friday 11th October we will be hosting our first tribute night...with Jon Fisher as Gary Barlow! He'll be singing lots of the the Take That classics as well as other popular songs. Not only does he look like Gary - he sounds amazing. Check out his instagram @jonfisherasgarybarlow

Tickets are on sale now at www.pta-events.co.uk/glebeprimaryickenham

Spooky Sparkle Disco

Tickets are now ON SALE for our Spooky Sparkle Disco on Thursday 7th November

Years 1, 2 and 3 5:00-6:00pm
Years 4, 5 and 6 6:30-7:30pm

Please don't delay in getting your tickets - sales close the day before the disco and we cannot make any sales after that time.

Doughnut Sale

Our next treat sale will be on Friday 24th October with our Krispy Kreme sale! Come along to grab an end of term treat! All doughnuts are £1.

Christmas Artwork

Yes, we're talking about Christmas and it's only September! The children have started creating some wonderful artwork in class that will be available for you to purchase in various forms (Christmas Cards, Mugs etc). Order forms will come home to you soon. Please can you return your completed order form to your class teacher by **Friday 11th October**.

AGM

Our annual general meeting is being held on Monday 16th November 6pm at the school. Please come along to learn more about Friends of Glebe and what we do. You don't have to commit to anything by coming along.

Christmas Panto

Unfortunately, due to low uptake last year we have taken the decision to not pre-purchase tickets for Beck Theatre Panto this year, so don't delay in making your own booking.

ASDA Rewards

You can earn money for the school everytime you shop at Asda. Simply download their rewards app, select Glebe Primary School and scan every time you shop! Please see the posters for more information.

Dates for the Diary

If you'd like to get involved with any of our events please get in touch!



Little Recyclers Collection

Thursday 3rd October

Fill any bag with your preloved clothing and bring to school before 9am. Please see the posters for what you can / cannot include



Christmas Order

Forms Due

Friday 11th October

Gary Barlow Tribute

Friday 11th October

Join us for a night of singing and dancing with Jon Fisher as Gary Barlow!



Doughnut Sale

Friday 25th October

Find us in the small hall, next to the main reception



Spooky Disco

Thursday 7th November

Please see posters for more details.



AGM

Monday 16th November



If you aren't already following us on Facebook or Instagram, please do so. It is the easiest way to keep up to date on FoG news and events.

Facebook facebook.com/friendsofglebepta

Instagram @friendsofglebeickenham

If you would like to get involved in any way or have any questions, please email us at FriendsofGlebe@outlook.com.

The Friends of Glebe Team





SCHOOL FUNDRAISING



More clothes -
more funds for
your organisation.
1 kg = £0.55

YOUR COLLECTION IS
ARRANGED ON:

Thursday 3rd October

FILL ANY BAGS WITH CLOTHING AND
BRING THEM TO SCHOOL/ORGANISATION
WE WILL COLLECT AND WEIGH THEM

WE ACCEPT

- Good quality clean clothing (adult's, children's, baby)
- Shoes (paired)
- Bags
- Hats & scarves
- Belts
- Fashion accessories
- Swimwear, lingerie
- Jewellery
- Perfumes

WE DON'T ACCEPT

- Uniforms
- Dirty, wet, ripped, damaged clothing
- Traditional clothing
- Duvets & pillows
- Single shoes
- Toys, stationery
- Bric-a-brac & electrical items
- Books, CDs, DVDs
- Workwear
- Carpets, rugs, mats, curtains
- Hygiene items, diapers
- Linen & towels

PLEASE NO UNIFORMS & DUVETS!

RAISE MONEY FOR YOUR SCHOOL BY GIVING
AWAY YOUR UNWANTED CLOTHES

Please do not bring bags to school until Thursday 3rd October!



GARY BARLOW

Tribute

JOIN US FOR A NIGHT OF SINGING AND DANCING WITH JON FISHER AS GARY BARLOW!

SINGING ALL THE TAKE THAT CLASSICS AS WELL AS MANY MORE COVERS THAT WILL GET YOU ON THE DANCE FLOOR



7:30
PM

11TH
OCTOBER

£15*



Glass of Prosecco (or soft drink) on arrival

GLEBE PRIMARY SCHOOL
SUSSEX ROAD, UB10 8HP

See Jon in action on his instagram:
@jonfisherasgarybarlow

Tickets available from:
www.pta-events.co.uk/glebeprimaryickenham

*booking fees apply



Friends of Glebe are pleased to invite you to our



SPOOKY DISCO

THURSDAY **7 TH** NOVEMBER

YEARS 1,2 & 3 5:00-6:00PM
YEARS 4,5 & 6 6:30-7:30PM
£5 INCLUDING A SNACK

TICKETS MUST BE BOUGHT IN ADVANCE FROM PTA EVENTS
CODE GLEBEPRIARYICKENHAM, (QR CODE BELOW) OR
WWW.PTA-EVENTS.CO.UK/GLEBEPRIARYICKENHAM



Tickets on sale NOW

(ticket sales will now close Tuesday 31st October)



AGM

MONDAY 18TH NOVEMBER

6:30PM
SCHOOL HALL

Friends of Glebe is the school's Parent Teacher Association, we organise fun events and fundraisers throughout the year. All proceeds go towards the school.

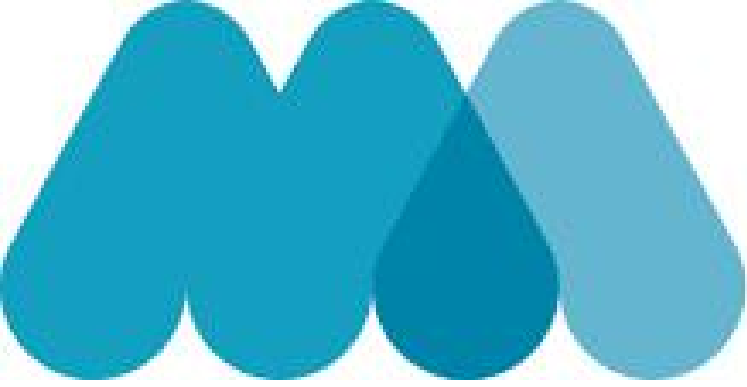
Please come along to find out more about FoG and how you can get involved.



WE NEED YOU!

JOIN US ON FACEBOOK
FOR OUR LATEST UPDATES





**MISCARRIAGE
ASSOCIATION**

The knowledge to help

**My name is Kyesha, I am Klay (1S) and Kane's
(Nursery) mum.**

**I am running the London marathon in April for
the miscarriage association and I have been
given the task of fundraising some money.**

**Please visit my Just Giving page as any
support would be massively appreciated!**

**[https://www.justgiving.com/page/kyesha-mansfield-
1721681131217?](https://www.justgiving.com/page/kyesha-mansfield-1721681131217?utm_medium=fundraising&utm_content=page%2Fkyesha-mansfield-1721681131217&utm_source=copyLink&utm_campaign=pfp-share)**

**utm_medium=fundraising&utm_content=page%2Fkyesha
-mansfield-**

**1721681131217&utm_source=copyLink&utm_campaign=pfp-
share**



RECEPTION



HIGHLIGHTS

YEAR 1



In Science
we carried
out a
taste test.



In R.E. we learned about
naming ceremonies.



In History
we explored toys
from the past.

PIC•COLLAGE

HIGHLIGHTS

YEAR 2



In Year 2, we have been exploring the vocabulary and definitions to write our Florence Nightingale diary accounts.



PIC•COLLAGE

HIGHLIGHTS

YEAR 3

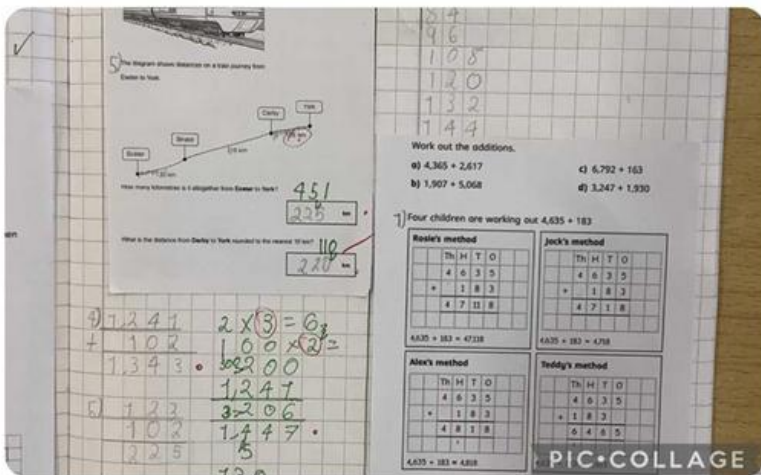
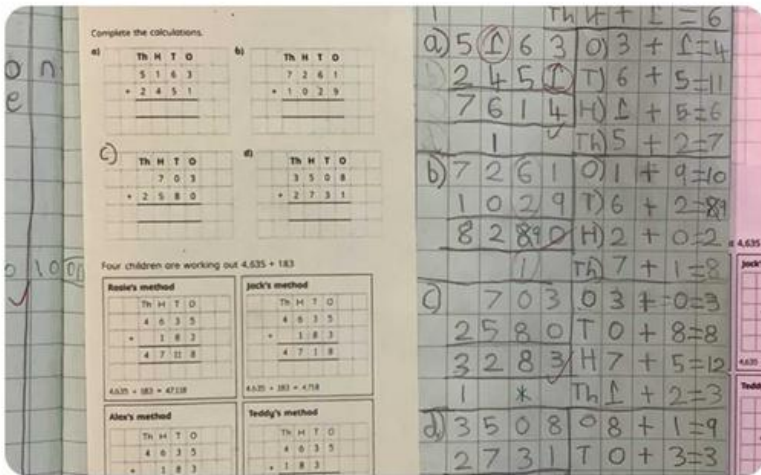


HIGHLIGHTS

YEAR 4

Year 4 have been learning about column method (addition) with exchange!

Furthermore, we have built on our understanding of our model text in English by creating our own text map.



HIGHLIGHTS

YEAR 5

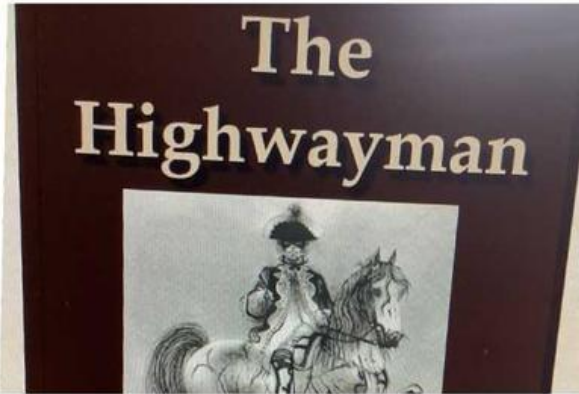


YEAR 5
WE CREATED LAYERED ART IN
THE STYLE OF HIROO ISONO



HIGHLIGHTS

YEAR 6



HIGHLIGHTS



**Wishing you all a
lovely weekend.**

Mrs Penney



GLEBE
WEEKLY
SCHOOL
NEWS