



GLEBE

GLEBE PARENT NEWSLETTER



I hope you have all had a good week.

Monitoring & Reporting Attendance

From next week, instead of providing a percentage attendance for each class, I will be sharing how many sessions were missed in each class. This is to promote the message that 'every lesson counts'.



Lunar New Year

I hope our families who celebrated Lunar New Year on Wednesday had a wonderful time.

Mystery Guest

Last week's mystery guest was.... The Highway Rat! Well done to everyone who guessed correctly.



Weekly Attendance %

6A	98.6
2F	97.9
5I	97.9
2C	97.6
4W	97.3
1M	97
6L	96.8
5IP	96.7
3D	96.3
1G	95.9
3ME	95.5
6K	95.5
1S	95.4
RP	95.2
2J	95.2
3G	94.7
4JL	94.3
4V	94
5M	93.4
RW	92.9
RB	91.8

Whole School

95.4%

FRIDAY 31ST JANUARY 2025

ATTENDANCE

Good attendance at school is vital to the current and future success of all children. Research has proven there is a strong link between school attendance and academic performance and success of children. It also impacts on their personal and social development. Absence from school can result in children falling behind their peers and not meeting age related expectations due to missed learning which can be difficult to catch-up on. This also makes it more difficult to be successful with the future learning as gaps in their learning prevent them from moving on when they should. That is why at Glebe we aim for all our children to have 100% attendance or at least 95% attendance so they can benefit from everything a high quality education has to offer.

Take a look at our attendance graphic to see how time missed from school adds up over the year:

100%	95%	90%	85%	80%
Excellent Attendance	Good Attendance	Cause for Concern	Serious Cause for Concern	Critical Cause for Concern
<p>0 days absent</p> <p>0 weeks absent</p> <p>0 lessons missed</p> <p>0 hours of learning missed</p> <p>Best chance of success and this will give your child the best start in life.</p>	<p>10 days absent</p> <p>2 weeks absent</p> <p>66 lessons missed</p> <p>47.5 hours of learning missed</p>	<p>19 days absent</p> <p>4 weeks absent</p> <p>133 lessons missed</p> <p>95 hours of learning missed</p> <p>1 day missed per fortnight on average.</p> <p>PERSISTANT ABSENCE: Attendance needs to improve to give your child the best chance of success.</p>	<p>28.5 days absent</p> <p>6 weeks absent</p> <p>199 lessons missed</p> <p>142.5 hours of learning missed</p> <p>1.75 years of missed schooling over 13 years</p> <p>The Attendance Officer will be in contact</p>	<p>38 days absent</p> <p>8 weeks absent</p> <p>166 lessons missed</p> <p>1 day missed on average per week</p> <p>2.5 years of missed schooling over 13 years</p> <p>This will limit the chances of success and will seriously harm your child's learning as well as their social opportunities.</p>

ATTENDANCE

Do I need to keep my child off school? Public Health Guidance

Chicken Pox

Until all spots have crusted over

Conjunctivitis

No need to stay off but school or nursery should be informed

Diarrhoea & Vomiting

48 hours from last episode

Glandular Fever

No need to stay off but school or nursery should be informed

Hand, foot & mouth

No need to stay off but school or nursery should be informed

Impetigo

Until lesions are crusted & healed or 48 Hours after commencing antibiotics

Measles or German Measles

4 days from onset of rash

Mumps

5 days from onset of swelling

Scabies

Until after first treatment

Scarlet Fever

24 hours after commencing antibiotics

Slapped Cheek

No need to stay off but school or nursery should be informed

Whooping Cough

48 Hours after commencing antibiotics

Flu

Until recovered

Head Lice

No need to stay off but school or nursery should be informed

Threadworms

No need to stay off but school or nursery should be informed

Tonsillitis

No need to stay off but school or nursery should be informed

A photograph of two children in a field of yellow flowers. One child is using a magnifying glass to look at a small white flower held by the other child.

HIGHLIGHTS

Year 1 Trip to Kew Gardens

A decorative border featuring various green leaves, including a large monstera leaf on the left and smaller leaves on the right.

YEAR 1 TRIP TO KEW GARDENS

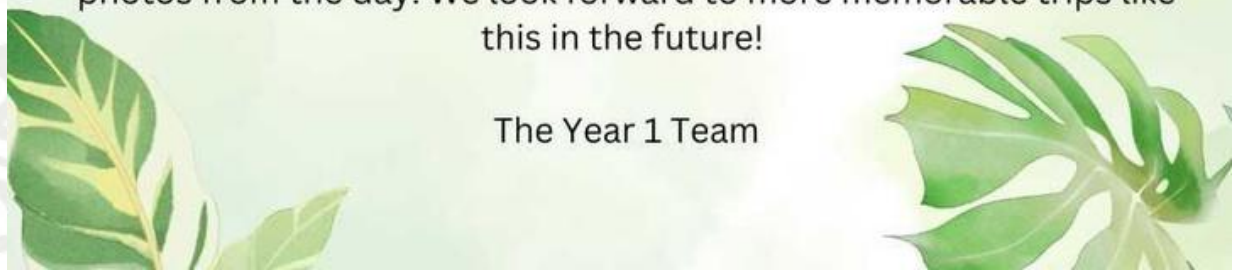
On Wednesday, Year 1 children had a wonderful visit to Kew Gardens for an exciting and educational day out. The children behaved wonderfully, demonstrating great respect for the environment and others throughout the day.

The trip was packed with learning experiences, from observing the towering trees to walking between rare and exotic plants found in the famous glasshouses. Some adventurous children even braved the tree top walk, enjoying the spectacular views. The experience offered not only an unforgettable view of nature but also a thrilling challenge for those who took part.

During the Plant Hunter workshop, the children explored a variety of trees and loved collecting and sorting different tree parts, creating bark rubbings and identifying the different trees.

The day was a fantastic success, filled with discovery and fun. We would like to extend our thanks to all the staff, parent helpers who helped on the trip and to the children for their fantastic behaviour and enthusiasm. Take a look at the Year 1 highlights page for some photos from the day. We look forward to more memorable trips like this in the future!

The Year 1 Team

A decorative border at the bottom of the page featuring various green leaves, including a large monstera leaf on the right and smaller leaves on the left.



HIGHLIGHTS

Nerys Pearce Visit

Yesterday we were very privileged to welcome Nerys Pearce to Glebe. The 9-time world record holder led fitness circuits with all pupils from Reception to Year 6, followed by a motivational assembly, and Q&A session. The aim of the event was to inspire the pupils to be more physically active, but just as importantly, encourage them to discover and pursue their passion in life - regardless of what barriers they may face.

Once every class had completed the fitness circuit, Nerys led an assembly for KS2 where she gave an outstanding and inspiring talk about her careers - both before and after her accident - and her resilience in the face of adversity.

It was a fabulous day - the children really shone and both Ian and Nerys praised the children's behaviour and their kindness towards each other. Both visit many schools and they said that Glebe is in their top 5 of the best schools they have visited.

Thank you Nerys and Ian from Sports for Schools for such a fantastic event, to Mr Vandorpe for organising it and to FOG for paying for the experience.

MRS LONG'S SPORTS NEWS

Netball

On Wednesday, three teams travelled to Newnham for an action-packed afternoon of netball, showcasing skill, teamwork, and determination. For a few girls, this was their first match, and they rose to the challenge brilliantly, showing confidence and enthusiasm on the court.

Despite not securing a win, the teams put on an impressive display, demonstrating excellent goal-scoring and strong defensive play. From the first whistle to the final moments, every player gave their all, and although the final results didn't go our way, the effort and enthusiasm from all teams; they are a credit to our school.



REMEMBER



Key Information & Dates



Parent Consultation Evenings

Our booking system for parents' evening appointments is now live so please book your appointments as soon as you can.

Parents of 2C pupils please note, we have had to adjust the day as Mr Dwyer is unavailable on Tuesday 11th February, so he and Mrs Chaudry will be meeting with parents on Monday 10th from 3.40 - 6pm instead.

Dance-a-thon

In order to celebrate Children's Mental Health Week and raise money for Place2Be, the school council committee have voted to host a dance-a-thon on Friday 7th February.

This is a fundraiser the children can really get behind, as they aim to complete an 20-30 minutes of non-stop dancing and get sponsored by friends and family to do it.

We are asking for a voluntary contribution of £1 for the non-uniform day and for you to sponsor your child with a contribution of your choice.

https://www.justgiving.com/page/glebeprimaryschool?utm_medium=FR&utm_source=CL



Improving
children's mental
health

REMEMBER



Key Information & Dates



Spring Term - 2025

Thursday 6th February - 3G Class Assembly at 9.15am - parking on playground from 9.05 but not before for health and safety reasons

Friday 7th February - Sponsored Dance-a-thon in aid of Place2Be

Tuesday 11th February - Parent Consultation Evening: 4pm - 7pm

Thursday 13th February - Parent Consultation Evening: 4.30pm - 7.30pm

Half Term: Monday 17th - Friday 21st February

Monday 24th February - Training Day: School closed to all pupils

Thursday 27th February - 3D Class Assembly at 9.15am - parking on playground from 9.05 but not before for health and safety reasons

Monday 10th March - Reception Spring Show for parent: 10am

Tuesday 11th March - Reception Spring Show for parent: 2.30pm

Wednesday 12th March - Reception Spring Show for parent: 10am

****Please note there will be no parking available on site for any of these performances****

Tuesday 25th & Wednesday 26th March - Year 3 trip to the Chiltern Open Air Museum

UPDATES



This week's winners are

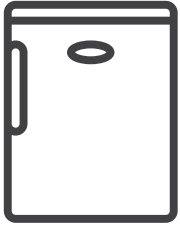
5M

Maths Group

5I

Maths Group

CAN YOU HELP?



Under Counter Fridge

Are you or any you know able to donate an under counter size fridge as Nursery's has broken?

If you are, please let Mrs Fitzwater in Nursery know.

Loose Parts

We are still in need of loose parts to help us with our OPAL project. If you can supply any of these items, or can direct us to a company who can, please let us know.

- Astro turf cut offs
- Boards, panels
- Crates (eg bread crate, milk crate, grocery crate)
- Briefcases
- Buggies/ Pushchairs
- Cable drums
- Carpet samples/squares
- Fabrics
- Foam pipe covers and noodles
- Guttering (not metal)
- Hoses
- Keyboards
- Metal pots/pans/trays (especially catering sizes)
- Nets
- Old, small household appliances (Microwave, fax machine etc)
- Pallets
- Phones
- Piping
- Planks and decking
- Plastic chairs with no legs
- Plastic road barriers
- Plastic trugs/ water carriers/ watering cans
- Ropes
- Wheels (eg small children's bike wheels)
- Sand pits (large)
- Sand bags
- Small wheely bins
- Sofa and Chair cushions
- Steering wheels
- Suit cases
- Tarps
- Traffic cones
- Tyres (car, go-cart, bike etc)
- Waterproof cot mattresses
- Large wooden blocks and cut offs



JOIN OUR
HERO SQUAD
THIS HALF TERM!



FUNWEEKS

FEBRUARY ACTIVE CAMP



BOOK ONLINE:
WWW.THEPSDGROUP.ORG.UK

EARLY BIRD PRICING:

BOOK BEFORE
MIDDAY ON
12TH FEB
£25.00

BOOK AFTER
MIDDAY ON
12TH FEB
£26.50

EPIC SPORTS!
SUPERHERO CRAFTS!

PRIZES!

CHALLENGES!

**10% SIBLING
DISCOUNT!**

GLEBE PRIMARY SCHOOL

MONDAY 17TH - FRIDAY 21ST FEBRUARY 25
9AM - 3PM • £25.00 PER DAY

EXTENDED HOURS AVAILABLE FROM 8AM - 6PM
8AM - 9AM - £5.00 8AM - 6PM - £40.00

CONTACT US:

☎ 0203 397 7409

✉ info@thepsdgroup.org.uk

📷📱 [thepsdgroupuk](https://www.thepsdgroupuk)



SCAN TO BOOK

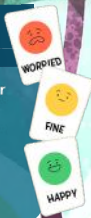
10 Top Tips for Parents and Educators

SUPPORTING CHILDREN TO DEVELOP EMOTIONAL LITERACY

Emotional literacy refers to the ability to recognise, understand and express our feelings effectively. It plays a crucial role in strengthening a child's wellbeing by enhancing their relationships and resilience. However, emotional literacy is not necessarily an innate talent, and its development may present challenges. This guide gives parents and educators practical tips on supporting children to cultivate this essential skill.

1 NAME THE EMOTION

Encourage children to identify and name their emotions. This helps them understand what they're feeling and why. Use simple language and relatable examples to make it easier for them to share their emotions. This builds a foundation for emotional understanding and open communication.



2 MODEL EMOTIONAL EXPRESSION

Demonstrate healthy emotional expression by sharing your feelings visibly. When children see adults properly displaying how they're doing and what they're thinking, they learn to do the same. Discuss how you handle emotions in different circumstances, providing a real-life framework for young ones to follow.



3 MINDFULNESS ACTIVITIES

Teach children mindfulness practices to help them stay present and manage their emotions during more challenging moments. Activities like deep breathing, meditation or yoga can reduce stress and enhance emotional regulation. Regular practice can improve focus and emotional stability, which can significantly help children both as they're growing up and throughout their adult life.



4 USE STORYTELLING

Incorporate storytelling to help children understand emotions. Stories can offer relevant scenarios illustrating how the characters experience and manage their feelings. Discuss the emotions depicted in stories and ask children how they might feel in similar situations.



5 PRACTISE EMPATHY

Teach children to consider others' views and emotions – and to explore why they might think or feel this way. Role-playing and discussing various scenarios can enhance their ability to empathise. Understanding others' emotions helps children to develop compassion and improves their social interactions.



6 ENCOURAGE JOURNALING

Suggest keeping a journal to make note of thoughts and emotions, as writing can provide an outlet for self-reflection and emotional processing. Encourage children to write about their daily experiences and feelings, helping them gain insight into their emotional world. Do this alongside them, so they can see and experience how to do it effectively.



7 TEACH PROBLEM-SOLVING

Do what you can to help children develop problem-solving skills to assist in managing emotional challenges. Discuss potential solutions to emotional conflicts and encourage them to think critically about what they (and others) can do to process their feelings in a healthy way. This empowers children to handle emotions positively and build resilience.



8 CREATE A SAFE SPACE

Establish an environment where children feel safe to display their emotions without judgement. Encourage open exchanges and reassure them that all feelings are valid. This supportive atmosphere promotes trust and encourages children to express themselves with confidence.



9 USE VISUAL AIDS

Take advantage of visual aids like emotion charts or mood meters to help children identify and express their feelings. Use these tools regularly in your interactions. They provide a visual representation of emotions, making it easier for children to communicate their emotional state.



10 CELEBRATE EMOTIONAL GROWTH

Acknowledge and celebrate progress in emotional literacy, and praise children for expressing their emotions and handling them effectively. Positive reinforcement is a useful tool that will encourage continued growth and reinforces the importance of emotional literacy – encouraging young people to maintain the good habits and healthy behaviours that you've taught them.



Meet Our Expert

Adam Gillett is Associate Vice-Principal for Personal Development at Penistone Grammar School and works on secondment one day a week for Minds Ahead, an organisation that supports schools in improving their mental health provision.



#WakeUpWednesday

The National College

February Short Courses are here

Make a splash this February half term with our swimming short courses! Whether your child is a beginner or looking to improve, our expert instructors will help them build confidence and skills. Sign up today!!

For more information please speak to a member of staff or visit better.org.uk/swimming-lessons

**Monday 17th - 21st
of February**



Better is a registered trademark and trading name of GLL (Greenwich Leisure Limited), a charitable social enterprise and registered society under the Co-operative & Community Benefit & Societies Act 2014 registration no. 27793R. Registered office: Middlegate House, The Royal Arsenal, London, SE18 6SX. Inland Revenue Charity no. XR43398

BETTER

What's
on...

at Ickenham Library

February

Saturday 1 February 11am-12pm

Chinese New Year Stories and Crafts

Join us during National Storytelling Week to listen to stories about Chinese New Year and make some paper snakes to celebrate the Year of the Snake. For 5-11 years



New on Thursdays from 6 February 4-4.45pm (term-time only)

Story Stars

Fire up your imagination by listening to an exciting story followed by a fun activity. For 5-7 years



Tuesday 18 February 11am-12pm

Jane Austen 250: Decoupage Delights

Learn about Jane Austen, her life and books as you take part in the Regency activity of decoupage using pressed flowers and paper to decorate jam jars and shells.

For 7-11 years



Saturday 22 February 11am-12pm

Sow and Grow Kids: Heart Month

Share what you love about nature and make some heart-shaped decorations using natural materials.

For 5-11 year olds



For more information please speak to a member of staff or visit www.hillingdon.gov.uk/libraries. To book a place scan QR code.



NURSERY

We have been learning
Number Rhymes

5 little
ducks 🦆

We have been learning all
about Chinese New Year 🧧

5 little monkeys 🐒
We made monkey
sandwiches 😊

5 current buns 🍪

PIC•COLLAGE

HIGHLIGHTS

RECEPTION



HIGHLIGHTS

YEAR 1



Year 1's trip to
Kew Gardens



PIC•COLLAGE

HIGHLIGHTS

YEAR 2



*Year 2 had a fun
work out with
Nerys Pearce the
fabulous
paralympian .*

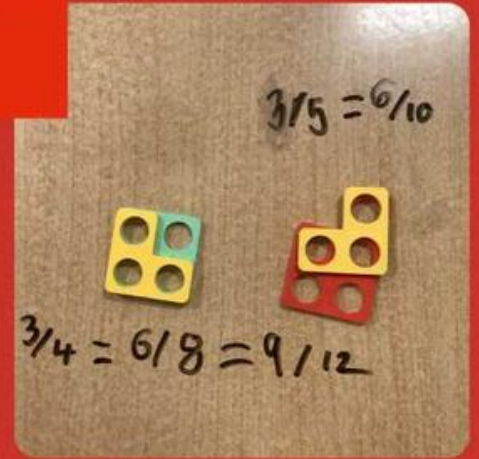


PIC • COLLAGE

HIGHLIGHTS

YEAR 3

Finding equivalent fractions



Activity and assembly with Nerys Pearce



Hot seating in English



PIC • COLLAGE

HIGHLIGHTS

YEAR 4



HIGHLIGHTS

YEAR 5



Year 5

We enjoyed meeting Nerys Pearce and creating collage animals.



PIC•COLLAGE

HIGHLIGHTS

YEAR 6



PIC • COLLAGE

HIGHLIGHTS

Wishing you all a
lovely weekend.

Mrs Penney

Who is our mystery guest?

Clue 1: I celebrated my 40th birthday on 7th January.

Clue 2: I hold the records for most wins (79), pole positions (86), and podium finishes (142).

Clue 3: I became a 'sir' in 2021.

Clue 4: I hold the joint-record for seven Formula One World Drivers' Championship titles (tied with Michael Schumacher)



GLEBE
WEEKLY
SCHOOL
NEWS