



GLEBE

GLEBE PARENT NEWSLETTER



I hope you have all had a good week.

I'm sorry that I have not been as available at the start of the day this week. Certain protocols apply during the administration of KS2 SATs tests and I have to oversee the process and follow up on certain procedures. Normal service will resume next week and I look forward to being able to greet you all in the mornings - hopefully the weather will stay as lovely as it has been this week.

Mystery Guest

Last week's mystery guest was... Anne Frank. Well done to everyone who guessed correctly.



Attendance

No. of sessions missed this week
(SESSION = 0.5 DAY)

3G	2
5I	3
6L	3
6K	3
6A	3
RB	5
1G	5
3ME	5
3D	5
1M	6
4V	6
RP	7
2C	7
4JL	8
5IP	8
2F	9
2J	12
5M	14
RW	17
1S	27
4W	37

Whole School

192

sessions missed out of a possible 5,870

FRIDAY 16TH MAY 2025



PROUD PAGE

It's All About Year 6

I ended my message to the year 6 children on last week's newsletter by telling them that we just wanted them to do their best and I am delighted and proud to say that everyone of the children did exactly that.

Their focus, determination and work ethic was exceptional throughout the SATs tests - whether they find learning easy, or hard or whether they have significant barriers to learning. They gave each paper their all and that is all any of us could ask of them. As ever, the tests were challenging but the children did not let that faze them. They worked tirelessly through each paper, working diligently, going back and checking and keen to demonstrate what they have learned in KS2. I am so incredibly proud of them all.

I also want to take a moment to praise and thank all of the staff involved - from those who supported the children in smaller groups to avoid them becoming overwhelmed to the year 6 staff who have prepped the children so well that they felt confident to tackle the tests. It is testament to the staff that our pupils were focused but relaxed and just knew it was about trying their best.

PROUD PAGE

Nursery - Year 5

Other school events and highlights have been a bit thin on the ground this week due to SATs as we haven't wanted to create noise or make the year 6 children jealous of lovely things happening in the rest of the school.

So to the other 550 children in school who are not in year 6, I want to say

**T H A N K
Y O U**

for being so exceptionally patient and considerate: going out to play later than usual and moving very quietly around the school whilst the tests were happening so as to not disturb the year 6 children. Thanks to you, the year 6 children could fully concentrate and I'm sure this has helped them do well.

I am so proud of you for being so sensible and thoughtful towards the year 6 children. I know the rest of the school will do the same for you when it's your turn, whenever that is.

PROUD PAGE

Fletcher - Year 5

Last weekend, Fletcher Fenton in Year 5 represented Chelsea Football Club at the 2025 Bardolino Champions Cup, held in Italy. This tournament sees the best academy sides in the world (including Barcelona, AC Milan, Atletico Madrid, Juventus, Feyenoord, Inter and many more from across the globe) come together and compete for this prestigious trophy.

Fletcher's team raced through the qualifying, got through the main cup and then into the final round robin against Atletico Madrid and Feyenoord where, after 2 closely fought games, they ended up finishing in third place and going home with this impressive trophy. A huge well done to Fletcher, all of us at Glebe are extremely proud of your achievements.





Amazing play every day for every child

OPAL UPDATE

I am delighted to report that we will be launching Phase 1 of our OPAL programme on Monday. Today Miss Griffiths and Mrs Bhardwaj, our OPAL leads, presented an assembly to the children about OPAL and how playtimes will be transformed by it. We watched videos of schools who have already established the programme and the children were so excited to see what playtimes will look like in the future at Glebe. We have a long way to go in our play journey but we will be introducing the following opportunities from Monday:

- construction toys
- Lego
- dressing up clothes (with a catwalk)
- a variety of board games
- trains



Glebe Primary School

Head Teacher: Mrs M Penney MA, BA (Hons), PGCE

Sussex Road, Ickenham, Uxbridge, Middlesex, UB10 8PH

Tel: 01895 462385

Web: www.glebe.hillingdon.sch.uk

Email: office@glebeprimary.org

OPAL Introduction

Dear Parents/Carers,

We are about to launch our exciting new project to make our playtimes even better, in conjunction with Outdoor Play and Learning (OPAL) CIC. In 2018, OPAL won the best active schools' programme in Europe award and has been cited in two parliamentary reports as delivering outstanding practice. OPAL is working closely with Sport England to promote more active childhoods, which is one of the many reasons we are improving our playtime, as well as to improve opportunities for socialisation, cooperation, coordination, resilience, creativity, imagination and enjoyment for your child.

We strongly believe that: **“Play is freely chosen, personally directed, intrinsically motivated behaviour that actively engages the child. Play can be fun or serious. Through play children explore social, material and imaginary worlds and their relationship with them, elaborating all the while a flexible range of responses to the challenges they encounter. By playing, children learn and develop as individuals, and as members of the community.”** (Children’s Play Council 2001).

The project will start next week and our hopes are that it will change the way we think and how we play together. To facilitate this project, we will need to buy some new resources, move some things around on the playground and require some loose parts. We are also very grateful to FOG who will be supporting us to implement this programme.

As you know, we have been requesting different items for the project each week via Dojo and we are very grateful for your support so far. The more we are able to have donated, the better the experience will be for the children.

The changes will take place very gradually over the course of the next year or so, with the aim of building up to a more significant transformation in how play is approached across the school. Children will be kept informed regularly about each stage of the project and will be fully supported to help them adapt to any changes as they happen. This steady approach will ensure that everyone feels confident and excited about the journey ahead.

We will also be keeping you regularly informed and we will be beginning to update the school website with information about this.

<https://www.glebe.hillingdon.sch.uk/page/?title=Outdoor+Play+and+Learning+%28OPAL%29&pid=227>

Additionally, there will be more information to follow at a parent’s session later in the year, when you will be invited to learn more about the new changes. We are really excited about this project and hope that you will support us in our efforts to improve playtime for all children, helping them to develop mentally, socially and academically through richer, more meaningful play experiences.

Yours sincerely

Mrs Bhardwaj, Miss Griffiths and Mr Barnieh

OPAL Leads

REMEMBER



Key Information & Dates



High Fliers - Nursery Holiday Club

Bookings are still open for our Nursery May Half Term club at High Fliers! We've revised our timings to better suit families' needs and are now offering both morning and afternoon sessions for added flexibility. It would be wonderful to welcome as many Glebe families as possible - our sessions are always filled with fun, engaging activities to keep children active, learning, and happy throughout the break.

We look forward to another fantastic half term!

Book here: <https://bookwhen.com/highfliersharrowhillingdon>

Find out more at www.high-fliers.com

The High Fliers Team



Finance Assistant Post

We are looking to appoint a part time Finance Assistant to join our admin team.

6 hours per week

Starting July 2025

Interviews will be during the morning of **Thursday 5th June**.

To find out more, please visit: <https://crinklerecruitment.com/Job/Finance-Assistant-6172>



Pre-Loved Uniform Sale

Thank you so much to everyone who came along or helped with the sale last Friday. You all helped to raise £205 for the school which is amazing. The next sale will be at the Summer Fair in July. We hope to see you all there.



Parking for Sports Days

I am pleased to report that the London Borough of Hillingdon will be lifting the parking restrictions to enable parents/carers to attend sports days on the following days:

Monday 23rd June 2025

Tuesday 24th June 2025

Wednesday 25th June 2025

Thursday 26th June 2025

Please note this would be from 09:30 to 12:30 and all vehicles must park considerately within the white bays and display a note to say 'attending sports day at Glebe School' to avoid a fine.

CURD CORNER

We will soon stop collecting reusable plastic bottles and food storage containers as part of the Terracycle collection. If you are saving any, please drop these off by Monday 19th May.



UPDATES

This week's winners are



Well Done to both classes!

1S 3ME

REMEMBER

Key Information & Dates



Summer Term - 2025

Thursday 22nd May - 1M Class Assembly at 9.15am*

Monday 26th - Friday 30th May - Half term - School Closed

Monday 2nd June - Training Day - school closed

Tuesday 3rd June - Year 3 Chocolate Workshop

Friday 6th June - VE Day 80th anniversary celebration - RAF assembly and Mayoral visit

Monday 9th - 13th June - Scholastic Book Fair - before and after school

Thursday 12th June - Reception trip to Iver Nature Centre

Wednesday 18th June & Thursday 19th June - Year 2 trip to Amersham Field Studies Centre

Thursday 19th June - 1G Class Assembly at 9.15am**Parking on playground from 9.05 but not before for health and safety reasons for all 3 assemblies.

Monday 23rd June - KS1 Sports Day: 9.30 - 11am

Tuesday 24th June - EYFS Sports Day: 9.30 - 11am

Wednesday 25th June - LKS2 Sports Day: 9.30 - 11am

Thursday 26th June - UKS2 Sports Day: 9.30 - 11am

Tuesday 8th July - Meet the Teacher & Open Evening 5 - 7pm

Tuesday 15th July - Year 6 production to parents 9am

Wednesday 16th July - Year 6 production to parents 5pm

Thursday 17th July - Year 6 production to parents 6.30pm

Friday 18th July - End of Year reports sent home

Monday 21st July - Non-uniform day for winning House Team

Tuesday 22nd July - Year 6 Leavers Assembly at 9.15am

- School year ends - 1 hour early (2.20pm/2.30pm)

Scholastic Book Fair



Date: 9th - 13th June

Time:

Before school 8.40 - 9am

After school: 3.20 - 4pm

Cash and card accepted.



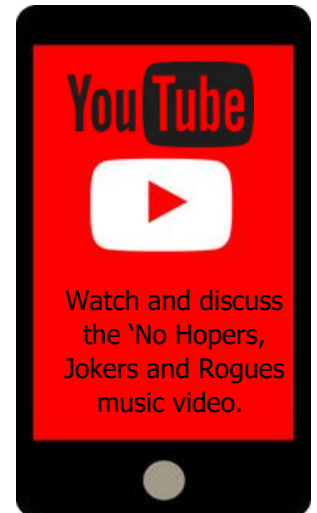


HOME INFORMATION

May's Musician of the Month



Fisherman's Friends



Fæ, 2016 ([https://commons.wikimedia.org/wiki/File:John_Cleave,_Fisherman%27s_Friends_\(30256689085\).jpg](https://commons.wikimedia.org/wiki/File:John_Cleave,_Fisherman%27s_Friends_(30256689085).jpg))

Now Playing

SPOTIFY

1:24 3:11

⏮ ⏸ ⏭

About: The Fisherman's Friends are a folk music group from Port Isaac, Cornwall, who sing sea shanties. They have been performing locally since 1995, and signed a record deal with Universal Music in March 2010. Whilst essentially an a cappella group (just singing with no instruments), their studio recordings and live performances now often include traditional simple instrumentation. Their unusual and remarkable success have been documented with two feature films.

Genres: Sea Shanties & Folk

Active from: 1995 - Present

Origin: Cornwall, England

Books to read...

If you like Fisherman's Friends, try...



- Nathan Evans
- Ruth Notman
- Coope, Boyes and Simpson



BREAK THE RULES DAY 2025

FRIDAY 23RD MAY

**FOR ONE DAY ONLY YOU CAN BREAK ANY
(OR ALL!) OF THESE RULES...**

1. NO Colourful Socks or Tights
2. NO Hats

3. NO Messy or Crazy Hair
4. NO Temporary Tattoos

5. NO Nail Varnish
6. NO Non School Shoes

7. NO Pyjamas
8. NO Sports Kit/Football Shirts

£1 TO BREAK THE RULES

ALL OTHER SCHOOL RULES APPLY AS NORMAL
£1 TO BE PAID TO YOUR CLASS TEACHER

What Parents & Educators Need to Know about MINECRAFT



Still the best-selling game of all time, Minecraft is a bastion of creativity and community, with hundreds of millions of players building and crafting in its almost endless world. The popularity of Minecraft among gamers of all ages means it's important to remain informed about the game, including how to play it safely and whether it's suitable for the children in your care. That's why we've created this guide explaining the risks associated with Minecraft and how to ensure a purely enjoyable gaming experience.

WHAT ARE THE RISKS?

SCARY ELEMENTS

While Minecraft can be seen as a kind of 'digital LEGO', certain game modes include creatures accompanied by eerie sound effects. These can be a bit too frightening for some younger players, potentially leading to distressing in-game combat and other encounters – although the combat is quite basic and free from any real depiction of violence.

GRIEFING

Some players in Minecraft take pleasure in deliberately damaging or destroying another person's creations. This behaviour, known as 'griefing', is a form of bullying – it intentionally ruins someone else's experience by erasing hours of their work and forcing them to start over. Many public servers regard griefing as a serious offence and often ban those who engage in it.

ADDICTIVENESS

Minecraft's focus on creativity means that, as with any creative endeavour, it can be easy to get carried away. If your child is finding it difficult to manage their time because they're drawn in by Minecraft's gameplay loop of resource gathering and building elaborate projects, it could have a knock-on effect on their social interactions and schoolwork.

PUBLIC SERVERS AND COMMUNICATIONS

With public servers being so easily accessible in Minecraft, it's highly likely that children will end up chatting with strangers through the in-game text chat. Some servers even place an emphasis on social interaction, actively encouraging communication between players. While there's nothing inherently wrong with this, it does carry certain risks. In addition to the concerns around speaking with strangers online, players who host their own servers may have their IP addresses exposed, posing a further security concern.

ADDITIONAL PURCHASES

Minecraft is available as a free trial on a variety of devices; however, the full game requires a one-off purchase, which is typically around £15. After that, players have the option to buy additional cosmetic upgrades or subscribe to Minecraft Realms. Realms is an entirely optional subscription service that allows users to run their own private server to play with friends. Without proper supervision, younger players may end up making unintended or excessive purchases.

Advice for Parents & Educators

CHOOSE THE RIGHT MODE

Selecting Creative or Peaceful mode allows children to play Minecraft without having to contend with enemies. It's also a great way for you to get used to playing the game with them, since the difficulty level is far lower. This allows you to work together on a long-term project, creating something special without the threat of enemies and creatures attacking you or damaging your building.

HOST A PRIVATE SERVER

The easiest way to find a safe server for children to play on is to make one yourself. Hosting a server prevents strangers from finding it, unless they've been given its address and password. A private server also lets you control who's allowed to enter and – if necessary – ban anyone who shouldn't be there. This is the closest equivalent to parental controls in Minecraft. Hosting a private server, however, will cost a monthly fee.

TALK ABOUT STRANGERS

At some point in their lives, almost everyone will make contact with a stranger online. Talking to children about online safety, therefore, is essential – as is having a plan for dealing with any hostile or difficult people. It's important that a child knows never to tell a stranger about themselves online and that they should come to you straight away if they do encounter a problem.

RESEARCH CONTENT CREATORS

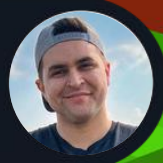
Much of Minecraft's early stages can be an exercise in frustration for players who don't know where to start. Thankfully, there's a wealth of material online and in video format to help you learn the basics. Just be mindful that some of this content may not be appropriate for children, so you should consider watching it yourself first.

PLAY MINECRAFT WITH YOUR CHILD

As a creative building tool, Minecraft makes it great fun for children to team up and construct vast buildings accompanied by imaginative landscapes, much like working with LEGO or model kits. Playing in a game mode that includes enemies can encourage critical thinking and teamwork; however, you should consider which game mode is appropriate for the child in your care.

Meet Our Expert

Lloyd Coombes is Gaming Editor at the Daily Star, and has worked in games media for more than 6 years. A long-time gaming enthusiast, he is also a parent and therefore a keen advocate of online safety for children of all ages.



#WakeUpWednesday

The National College



**METROPOLITAN
POLICE**

Hillingdon Borough
Email:
www.met.police.uk

13/05/2025

Dear Parent / Guardian,

RE: Wildlife / Animal Crime.

Hillingdon Police have recently been receiving a number of complaints from residents regarding cruelty towards animals. Young people, within the borough, have been seen harming the local wildlife and animals, including, killing kittens and using catapults to harm or kill ducks and swans. Police are currently working hard to identify those involved.

Whilst investigations are under way, one key area that supports our action is the education of young people around animal and wildlife crime. We know that this will be a small minority of young people, however we are asking, with summer approaching, that you please have conversations with your young people regarding their behaviour whilst out and about. Discussion around acceptable behaviour towards local animals and wildlife and make them aware that harming animals could constitute a criminal offence and will be investigated.

Please go through with them how they can report any wrongdoing, by reporting to yourselves, school, police, alternatively they can report anonymously on www.Fearless.Org (It is linked with Crimestoppers, so the same principles of being able to report incidents anonymously apply).

As a community, we can work together to protect our local wildlife and animals. Should you have any concerns or questions, or if you would like to report suspicious activity, please do not hesitate to contact your local police or community officers.

Kind regards,

Hillingdon Police.



HILLINGDON
LONDON

#DOSOMETHING

THISHALFTERM

The Hillingdon Youth Offer's Targeted Team is offering a fun-filled programme during the May Half Term school holiday for the enjoyment and growth of children and young people in Hillingdon. Across the action-packed days, expect activities ranging from collage making, crafts, exploring local heritage sites, creative arts, sports to cooking all aimed at fostering fun, creativity, teamwork skills and improved well-being. This is a fantastic opportunity for our young residents to learn new skills, make friends, and create lasting memories.

School years 4-6

Friday 30th May 2025, 10am-3pm at Harlington Young People's Centre, Pinkwell Lane, Hayes, UB3 4ES (with off-site trip to Pinkwell Park, Pinkwell Lane, Hayes, UB3 1TF – subject to weather/programme)

Lunch will NOT be provided. Please ensure your child brings a packed lunch, re-fillable water bottle and wear weather/activity appropriate clothes that they can move and get messy in.

To request a place for your child/young person to our holiday offer please visit <https://rebrand.ly/HYO/DSTHT/MAY2025>

*We are collaborating with the wider Youth Offer, the Family Hubs and Children's Centres to promote their offer. So, if you have a child aged 0-19, why not book onto one of their sessions that run across the borough.

The following links provide further information about other activities available to children and young people this school holiday and all year round in Hillingdon.

If you have a child aged 0-7, why not book onto one of our sessions that run across the borough? www.hillingdon.gov.uk/article/10475/Services-we-offer-at-our-family-hubs-and-childrens-centres

As featured in **primary**
times

High Fliers

HOLIDAY CLUB!

A huge range of fun and engaging activities in a nurturing & warm environment. Our experienced & qualified staff offer specialist workshops.

THIS MAY HALF TERM
at GLEBE SCHOOL

Engaging Activities


- ✓ Arts & Crafts, Construction
- ✓ Yoga
- ✓ Cookery
- ✓ STEAM

We offer great value & flexible options:

School Day (8.30am-3.30pm): £39

Half Day am (8.30am-12pm): £22

Half Day pm (12pm-3.30pm): £22

 high-fliers.com

 07466 550567

 Chiswick | Ealing | Eastcote |
Harrow | Ickenham | Northwood |
Ruislip | Watford

Ofsted Registered | Childcare Vouchers accepted

AGES
3-4





OPEN DAY

Hillingdon Fire Station

Sunday, 8th June 2025 11am–4pm

- **FIRE ENGINE ART GALLERY** – DESIGN A POSTER AND COME TO SEE IT DISPLAYED ON THE FIRE ENGINE! (*And experience more fun activities*).
- Posters should be A4, Fire Brigade related, and have your name and age.
- Deadline: 30th May 2025. Please deliver to School or Hillingdon Fire Station!

Uxbridge Road, Hillingdon, Middlesex, UB10 0PH

For more info contact Hillingdon White Watch:

T 020 8555 1200

E HILLINGDONW@london-fire.gov.uk

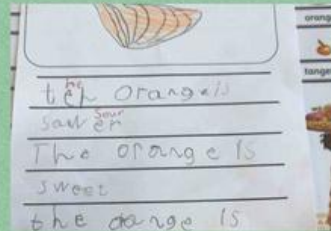
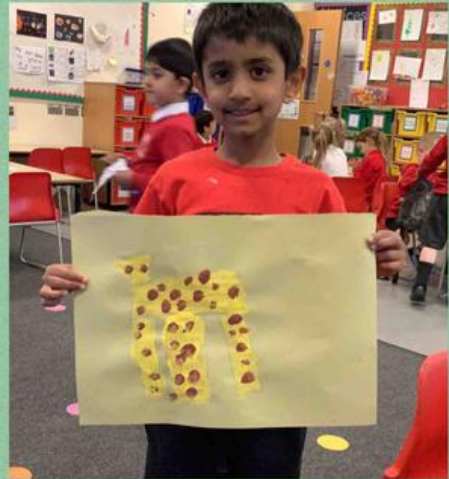


NURSERY



HIGHLIGHTS

RECEPTION



**THIS WEEK IN
RECEPTION...
HANDA'S SURPRISE,
WEEK 2 OF SPACE AND
SUBITISING.
PIC•COLLAGE**

HIGHLIGHTS

YEAR 2



HIGHLIGHTS

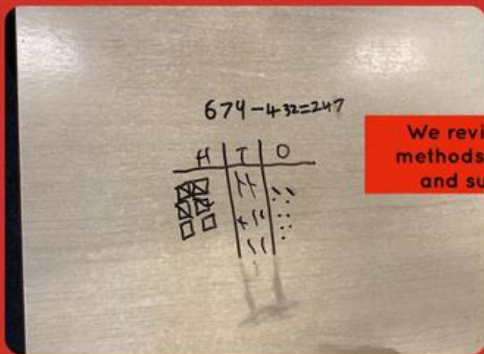
YEAR 3



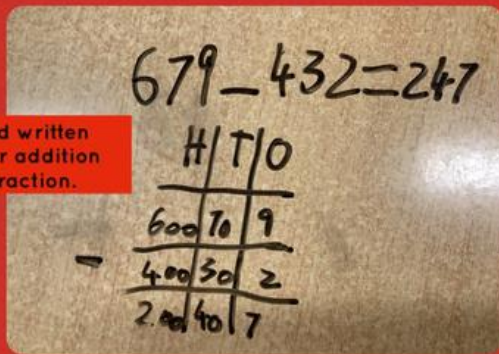
Ukulele lesson 2!



Learning about the Ancient Egyptians in history.



We revised written methods for addition and subtraction.



HIGHLIGHTS

YEAR 4

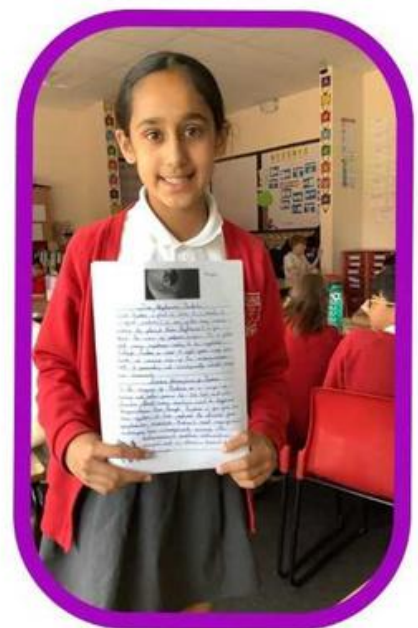
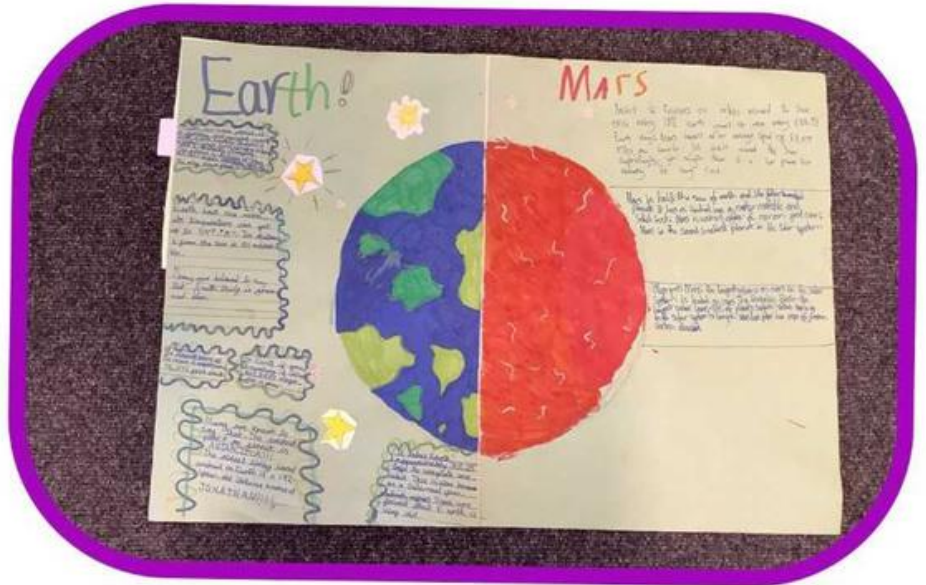


HIGHLIGHTS

YEAR 5

YEAR 5

A BUSY WEEK OF PASTA,
WRITING AND EXPLORING
SPACE.



PIC-COLLAGE

HIGHLIGHTS

YEAR 6

Celebrating the
end of SATs!



HIGHLIGHTS

Wishing you all a lovely weekend. Mrs Penney

Who is our mystery guest?

Clue 1: I first came onto TV screens in May 2004.

Clue 2: I was created to be a confident, bright and cheeky female character.

Clue 3: I have a whole theme park dedicated to me.

Clue 4: My favourite thing to do is jump in muddy puddles wearing my yellow wellies.



GLEBE
WEEKLY
SCHOOL
NEWS