



# GLEBE

## GLEBE PARENT NEWSLETTER



I hope you have all had a good week.

### OPAL

We have continued to add to the activities on offer this week. Balloon Thursday and Bubble Friday were a big hit!



Some of the children have been really creative and have woven baskets from the vines of the leaves from the willow tree.



**Attendance  
No. of sessions  
missed this week  
(SESSION = 0.5 DAY)**

1B	0
3S	0
RW	2
1M	2
3D	2
3G	3
6K	3
RB	4
1S	5
4W	5
2ME	6
2G	6
4V	6
5F	6
RP	7
6L	7
6M	7
2F	8
4JL	8
5I	9
5K	9

**Whole School**

**105**

sessions missed out of a possible 4632 (4 days)

FRIDAY 26TH SEPTEMBER 2025

# HIGHLIGHTS

## Zactiv Workshops

Everyone was delighted to welcome Zack, otherwise known as Gladiator Steel, into school last Friday.

Zack visited classes speaking to the children about the importance of a healthy lifestyle and keeping active.

Unfortunately, I missed the excitement and I gather the staff turnout in the hall for Zack's workshops was noticeably higher than the average assembly I present... 🤔

A huge thank you to Maria from FOG who arranged the visit and

orchestrated the photo opp with Zack and my cardboard cutout so I didn't feel left out!





# HIGHLIGHTS

## 5I Class Assembly

A huge thank you and well done to 5I who started our new year of class assemblies in style yesterday.

The children confidently presented all they have learned so far about rainforests - which was an impressive amount given how early in the term we are. The children also had a message for their loved ones, thanking them for their love and support and presented them with a card during the assembly and sang *Stand By Me* beautifully. So much so, that there weren't many dry eyes in the audience by the end of the assembly.

Thank you to Miss Islam, Mrs Kataria and Mrs Longhurst for putting together such an excellent assembly.

# REMEMBER



## Key Information & Reminders



### **Parent Parking Pledge**

Thank you to those who have already signed the Parent Parking Pledge. The local authority have been in touch to let me know they will be supplying the badges shortly.

For those who haven't yet done so, please consider completing it to keep the school run safe, respectful and considerate.

[Glebe Primary's Parent Parking Pledge](#)



### **Census Day**

Next Thursday (2<sup>nd</sup> October) is Census Day. This day (along with the one in January) is vitally important for our funding. In particular, the numbers of children who order a school lunch next Thursday will determine the level of funding we receive from the Government and the Mayor of London to provide free meals for all pupils.

A menu for the day can be found on page 8.



### **Cultural Evening**

Please don't forget to contact Miss Griffiths, Mrs Jayasekera or Miss Islam if you are interested in setting up a table of food (no nuts please), activities or games to celebrate your family's culture on the 12th November, from 4pm - 6pm. We would also welcome musical, drumming and dancing contributions.

I may even showcase my Irish dancing talents (Achilles tendon permitting) which should be well worth turning up for!

# REMEMBER



## Key Information & Reminders



### **Breakfast Club**

We have had an increasing number of children arrive at breakfast club without a booking recently. We have increased our capacity to 70 children due to demand but we cannot go higher than this. If you are unable to book via ParentPay, please note that this is due to bookings reaching capacity - not a glitch in the system. Please do not just turn up or drop your children off without checking we are expecting them or have space for them. Our ratios are set and we cannot breach these for health and safety purposes.

## Key Dates - before half term

### **Autumn Term - 2025**

Monday 6th October - Year 4 autumn presentation to parents at 9.15\*  
2ME trip to Florence Nightingale museum

Tuesday 7th October - Year 4 autumn presentation to parents at 2.15\*

Wednesday 8th October - Year 4 autumn presentation to parents at 6pm^

\* Please note: no parking is available on site for either of these performances

^ Parking restrictions in the surrounding roads do not apply after 5pm

---

Monday 13<sup>th</sup> October - 2F trip to Florence Nightingale museum

Tuesday 14<sup>th</sup> October - Year 6 trip to the Tower of London

Friday 17<sup>th</sup> October - Pre-loved uniform sale at 3.30 in the small hall

---

Monday 20<sup>th</sup> October - 2G trip to Florence Nightingale museum

Tuesday 21st October - Parent Consultation Evening: 4pm - 7pm

Thursday 23rd October - 5F class assembly - parking on playground from 9.05 but not before for health and safety reasons

- Parent Consultation Evening: 4.30pm - 7.30pm

**Half term - Monday 27th October - Friday 31st October**

# REMEMBER



## Key Dates - after half term



### Autumn Term 2025

#### *Half term - Monday 27<sup>th</sup> October - Friday 31<sup>st</sup> October*

Monday 3 <sup>rd</sup> November -	Children return to school - NO TRAINING DAY
Monday 3 <sup>rd</sup> - Friday 7 <sup>th</sup> November -	Year 5 swimming (week 1 of 2) - Year 6 Bikeability
Tuesday 4 <sup>th</sup> - Friday 7 <sup>th</sup> November -	Scholastic Book Fair - timings to be shared nearer the time
Wednesday 5 <sup>th</sup> November -	Year 3 trip to the Science museum
Thursday 6 <sup>th</sup> November -	5K Class Assembly - parking on playground from 9.05 but not before for health and safety reasons
	Outdoor classroom day
<hr/>	
Monday 10 <sup>th</sup> - Friday 14 <sup>th</sup> November -	Year 5 swimming (week 2 of 2)
Wednesday 12 <sup>th</sup> November -	Cultural Evening - 4pm - 6pm
<hr/>	
Monday 17 <sup>th</sup> November -	Year 4 trip to a Gurdwara
Wednesday 18 <sup>th</sup> November -	2ME & 4JL trip to the cinema (best attendance award)
Thursday 20 <sup>th</sup> November -	Open morning for prospective Nursery and Reception pupils
<hr/>	
Wednesday 26 <sup>th</sup> November -	Open morning for prospective Nursery and Reception pupils
Thursday 27 <sup>th</sup> November -	Training Day
Friday 28 <sup>th</sup> November -	Training Day
<hr/>	
Wednesday 3 <sup>rd</sup> - Friday 5 <sup>th</sup> December -	Nursery and Year 2 Christmas plays - times tbc



This week's winners are

2F 4W

Well done to both classes

# REMEMBER



## Key Information & Reminders



### Uniform

Full school uniform should be worn to school everyday with the exception of days when your child has PE.

<u>Boys</u>	<u>Girls</u>
Grey trousers or shorts	Grey skirt or trousers
Glebe logo sweatshirt	Glebe logo sweatshirt or cardigan
White polo shirt	White polo shirt
Black shoes (sensible for school - closed toes and heels, low heels, NOT boots or trainers*)	Black shoes - (sensible for school - closed toes and heels, low heels, NOT boots or trainers*)
	Red check/stripe dress - warm weather only



### Pre-Loved Uniform

Thanks to the very kind volunteers who organise and run the pre-loved uniform offer, there is no need for any pupil not to wear full school uniform. Even items with the school logo are sold for what you can afford to donate. Our next sale is on Friday 17th October after school. It is held in the small hall which is accessed via the main entrance via the office. Future sale dates are currently planned for Fridays 6th February and 8th May 2026, also to be confirmed, Summer Fair and end of August. We will try to warn you if these need to be moved.

However, if there are any items you need before the sales please email [glebeuniformsales@gmail.com](mailto:glebeuniformsales@gmail.com)

Please include your name, the items you need with sizes and your child's name and class so we can send the items to you via them. Apologies for the delay in replying to some emails, we do get to them eventually! If you definitely still need an item and have not yet heard back please resend the email with 'STILL NEEDED' in the subject box. This ensures we are not looking for items which are no longer needed.

At The Pantry

Census Day

Thursday 2<sup>nd</sup> October

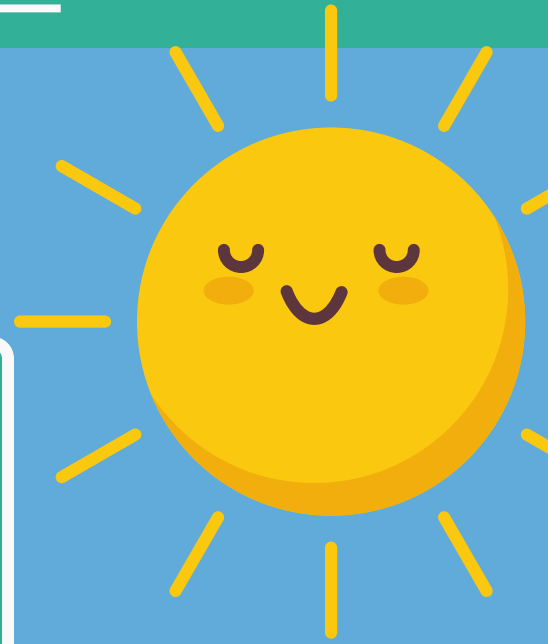
BURGER OR VEGGIE BURGER

with

FRIES & CORN ON THE COB

and for dessert

CHOCOLATE CAKE



# OCTOBER 2025

Mon	Tue	Wed	Thu	Fri	Sat	Sun
29	30	1	2	3	4	5
6	7	8	9	10	11	12
13	14	15	16	17	18	19
20	21	22	23	24	25	26
27	28	29	30	31	1	2

## DATES FOR YOUR DIARIES:

*Theme Day - Census Day*  
**Thursday October 2<sup>nd</sup>**

*Salad of the Month - Roasted Pumpkin & Red Onion*  
**Tuesday October 7<sup>th</sup>**

*Staff Engagement - Palace-to-Palace Bike Ride*  
**Sunday October 5<sup>th</sup>**

*Staff Engagement - Pumpkin Carving Competition*  
**Tuesday October 21<sup>st</sup>**

*Podcast - Paul Andrews, Family Business United*  
**TBA October**



**THEME DAYS**

**SALAD OF THE MONTH**

**EXTRA ENGAGEMENT**

**7-11-2025** — Census Day

**AT THE PANTRY** — Thursday October 2<sup>nd</sup>

**BURGER OR VEGGIE BURGER**  
 with  
 FRIES & CORN ON THE COB  
 and for dessert  
 CHOCOLATE CAKE

THE PANTRY  
 LUNCH TIME  
 FRESH FOOD

**October's Super Salad!**

**ROASTED PUMPKIN & RED ONION**

**THE PANTRY PRIZE!**

ORDER A MEAL EVERY SCHOOL DAY FROM SEPTEMBER 15<sup>TH</sup> TO NOVEMBER 28<sup>TH</sup> AND YOU COULD WIN A LUXURY CHRISTMAS HAMPER!

# NOVEMBER 2025

Mon	Tue	Wed	Thu	Fri	Sat	Sun
27	28	29	30	31	1	2
3	4	5	6	7	8	9
10	11	12	13	14	15	16
17	18	19	20	21	22	23
24	25	26	27	28	29	30

## THEME DAYS

**THEME DAYS** — Bonfire Night

**AT THE PANTRY** — Wednesday November 5<sup>th</sup>



**HOT DOG OR VEGAN HOT DOG**

with  
CHIPS & SWEETCORN  
and For dessert  
TOFFEE APPLE PIE



# DATES FOR YOUR DIARIES:

*Theme Day - Bonfire Night*  
**Wednesday November 5<sup>th</sup>**

*Salad of the Month - Roasted Root Vegetable*  
**Tuesday November 4<sup>th</sup>**

*Staff Engagement - Christmas Card Writing, Giveaway, and Lunch*  
**Thursday November 20<sup>th</sup>**

*Staff Engagement - Chef of the Year Final*  
**Friday November 21<sup>st</sup>**

*Podcast - Nadim Laperouse, Natasha's Allergy Research Foundation*  
**TBA November**

## SALAD OF THE MONTH



**November's Super Salad!**

**ROASTED ROOT VEGETABLE**

## EXTRA ENGAGEMENT

**THE PANTRY PRIZE!**



ORDER A MEAL EVERY SCHOOL DAY FROM SEPTEMBER 15<sup>TH</sup> TO NOVEMBER 28<sup>TH</sup> AND YOU COULD WIN A LUXURY CHRISTMAS HAMPER!





# DECEMBER 2025

Mon	Tue	Wed	Thu	Fri	Sat	Sun
1	2	3	4	5	6	7
8	9	10	11	12	13	14
15	16	17	18	19	20	21
22	23	24	25	26	27	28
29	30	31	1	2	3	4

## DATES FOR YOUR DIARIES:

*Theme Day - Christmas Lunch*

*Across the month of December on your chosen day*

*Salad of the Month - Vegan Brussel Sprout 'slaw*

*Tuesday December 2<sup>nd</sup>*

*Staff Engagement - Pantry Awards Night*

*Friday December 5<sup>th</sup>*

*Staff Engagement - Win It Wednesday*

*TBA*

*Podcast - Jayne Jones, Chair of Public Sector Catering*

*TBA December*



**THEME DAYS**

**SALAD OF THE MONTH**

**THEME DAYS** — Christmas Lunch

**AT THE PANTRY** — on your School's designated day

**ROAST TURKEY OR BEETROOT & SQUASH WELLINGTON**  
with  
ROAST POTATOES, YORKSHIRE PUDDING, CARROTS AND SEASONAL VEGETABLES  
and for dessert  
**GINGERBREAD COOKIE**

**December's Super Salad!**

**VEGAN BRUSSEL SPROUT 'SLAW**

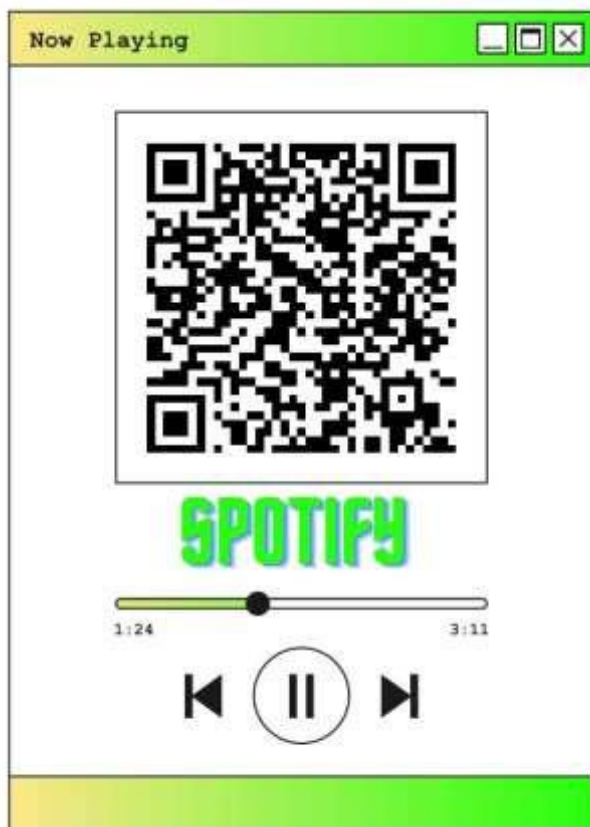
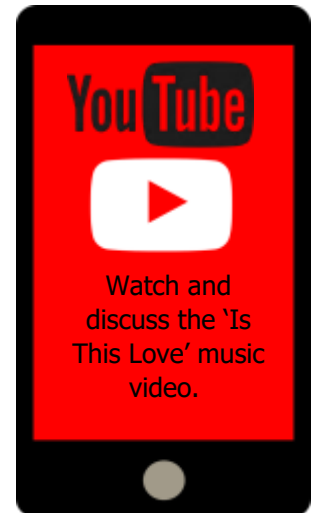


# HOME INFORMATION



## September's Musician of the Month

# BOB MARLEY



**About:** Robert Nesta Marley was a Jamaican singer, musician, and songwriter. Considered one of the pioneers of reggae, Marley's contributions to music increased the visibility of Jamaican music worldwide, and made him a global figure in popular culture.

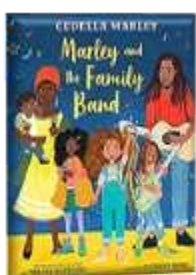
**Genres:** Reggae, Ska, Folk & Rocksteady

**Active from:** 1962 - 1980

**Origin:** Saint Ann Parish, Jamaica

Books to read...

If you like Bob Marley, try...



- The Specials
- Jimmy Cliff
- Sister Nancy

What's  
on...

# at Ickenham Library

## September

### **Book Bunch – limited places available**

**Tuesdays (term time) 4pm to 5pm from Tue 16 September**

For children aged 8 to 11 who love stories and want to explore exciting books together! Each week, we'll dive into fun adventures, meet amazing characters, and discover the secrets hidden in the pages. You'll learn how to think like a book detective - spotting clues, understanding big ideas, and sharing your thoughts with friends.

Email [Ickenham-library@hillingdon.gov.uk](mailto:Ickenham-library@hillingdon.gov.uk) to register interest



### **Create & Connect**

Adult artists we need you! Across all 16 of our libraries, giant community puzzles are taking shape. You will be given a puzzle piece to create a visual representation of your cultural heritage such as a town or village scene, landmark, food, flower or animal. Speak to a member of staff to book a space at one of our painting sessions in September.



Please note that children under the age of 11 must be accompanied by an adult when visiting the library. Adults must stay in branch while children are taking part in events or activities. Thank you.

We look forward to welcoming you all to Ickenham Library this term!

Scan the QR code to keep up to date and book for events



# NURSERY



*This week in  
Nursery...  
We have been  
learning about our  
families, homes,  
simple shapes and  
numbers 0-2.*



PIC·COLLAGE

# HIGHLIGHTS

# RECEPTION



In Maths we explored pattern and composition of numbers to 4



In Topic we continued to explore our senses



We are reading 'We're going on a bear hunt'



PIC•COLLAGE

# HIGHLIGHTS

# YEAR 1



Year 1 had a great time celebrating their hook day for *The Tiger Who Came to Tea*



# HIGHLIGHTS

# YEAR 2



We learned about a nurse's job and had a special lesson in wound care from Ms Varney.



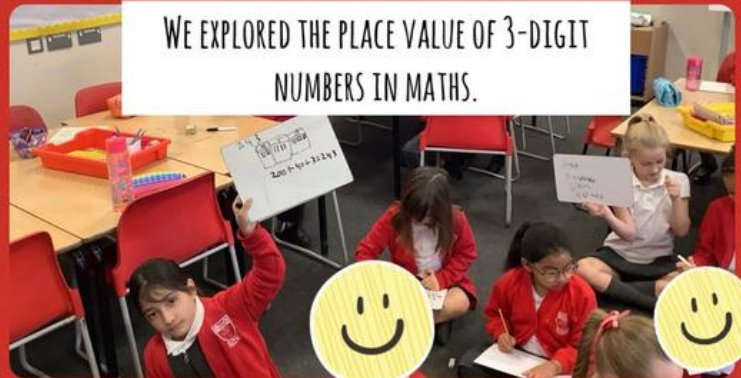
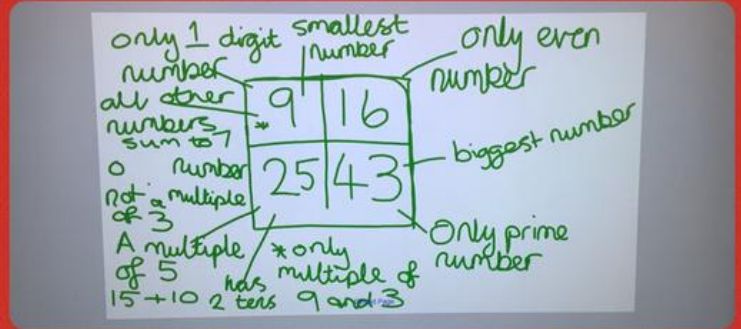
PIC • COLLAGE

# HIGHLIGHTS

# YEAR 3



WE LOOKED AT PNEUMATIC SYSTEMS IN D.T.



# HIGHLIGHTS

# YEAR 4

This week in year 4, we used the computers to help us with rounding and made a variety of objects for our new English topic!

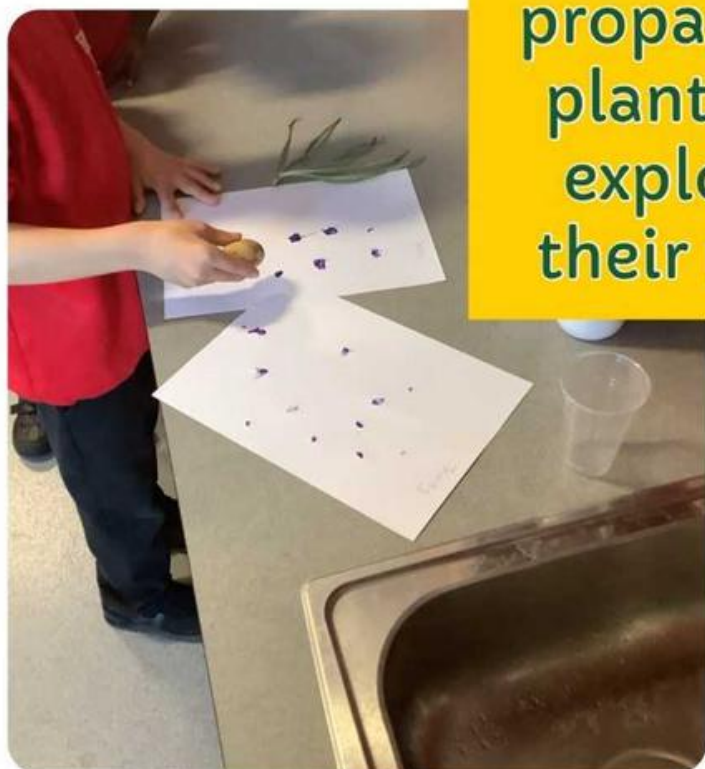


# HIGHLIGHTS

# YEAR 5

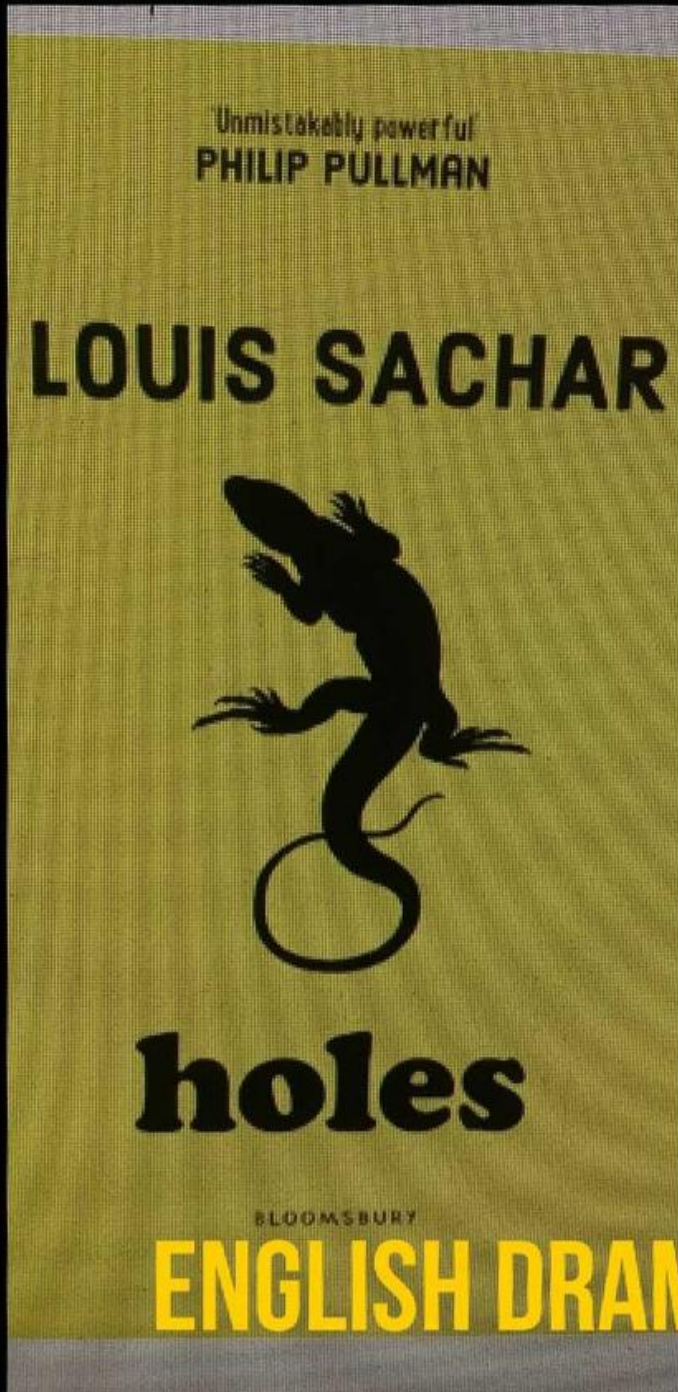


Year 5 have been busy propagating plants and exploring their roots.



# HIGHLIGHTS

# YEAR 6



# HIGHLIGHTS



Wishing you all  
a lovely  
weekend.  
Mrs Penney



GLEBE  
WEEKLY  
SCHOOL  
NEWS