



# GLEBE

## GLEBE PARENT NEWSLETTER



I hope you have all had a good week.

It's beginning to feel a lot like Christmas this week at Glebe!

We've had another busy week which has included school trips (for year 1 and year 5) and our Nursery and year 2 Christmas shows. More details about those later.

For the staff, we've had our pupil progress meetings where we discuss the progress of children in each class and target those who would benefit from further intervention support.

### Mystery Guest

The mystery guest last week was....Elphaba! Well done to everyone who guessed correctly.



### Attendance No. of sessions missed this week (SESSION = 0.5 DAY)

RP	0
1B	5
5K	5
RW	8
3S	9
4W	9
3G	10
3D	11
5I	11
6K	12
6M	14
5F	15
4JL	16
RB	19
1M	19
2F	19
4V	22
6L	32
2ME	33
1S	34
2G	40

### Whole School

# 343

sessions missed out of a possible 5802

FRIDAY 5TH DECEMBER 2025

# CONGRATULATIONS

We would like to congratulate Mrs Speed on the safe arrival of her beautiful baby girl. No name as yet but I will keep you updated. I am sure you will join me in wishing Mrs Speed and her family well at this exciting time.





# HIGHLIGHTS

## Year 5 trip to the Natural History Museum

Throughout this week, each Year 5 class had the opportunity to visit the Natural History Museum, where they took part in an amazing Biodiversity in Action workshop. The children stepped into the shoes of real scientists, learning all about biodiversity and ecology before using microscopes to classify a fascinating variety of insects—spotting key details they never knew existed! Their curiosity continued to grow as they explored the museum's incredible galleries such as visiting the Our Broken Planet exhibition, where they learnt about sustainability and how we can create a better future for Planet Earth. It was a day packed with discovery, hands-on science, and eye-opening moments that brought their learning to life!

Miss Islam

# HIGHLIGHTS

## Nursery Christmas Performance

The cuteness factor was in overdrive and there were Christmas jumpers a-plenty during this week's performances from our Nursery children.

The children sang and shook their bells with gusto throughout the 3 performances to their very proud family members and staff.

It's always the official start of Christmas for me and one of my favourite parts of the job.

A huge well done to the Nursery team who worked so hard to prepare the children for their time in the spotlight.





# HIGHLIGHTS

## Year 2 Nativity

The year 2 team went retro with their musical choices for this year's traditional nativity (which the staff wrote themselves).

The children performed superbly - all knowing their lines by heart and the lyrics to some proper nostalgic Christmas bangers - any performance that includes a Boney M song gets a thumbs up from me!

The children's rendition of 'Feliz Navidad' was a particular highlight with the children performing in 3 languages in the same song - Spanish, English and British Sign Language!

A huge well done to all involved and particularly to the year 2 teachers for writing such a great script.



# HIGHLIGHTS

Year 1 Trip to the Compass  
Theatre

**COMING SOON**

As this took place  
this afternoon, details  
will be shared in next  
week's edition of the  
newsletter



# SPORTS NEWS



## Netball



On Wednesday 3rd December, the Year 4, 5 and 6 pupils mixed their teams, with many making their netball debut, to take part in a mini tournament against BWI, Lady Bankes and Newnham.

Across the tournament they played a total of six matches. Both teams secured one win and two draws – with both victories coming against Newnham (who are incredibly tough opponents)!

Every player should feel incredibly proud of the progress they have made. Even those taking to the court for the very first time grew in confidence and skill as each match went on. A fantastic effort from everyone involved!



Kaythan, Remie, Rosie, Emily, Amber & Joanna (Joanna has been added onto the photo as she had to leave before the photo was taken).



Stefania, Cleo, Jamie, Joshi, Izzy and Eloise

# MR MITCHELL'S SPORTS NEWS

## Hockey Tournament

Both Glebe Primary School teams enjoyed great success in the November hockey tournament, which took place in the evening at Eastcote Hockey Club with 10 different schools taking part. Throughout the event, both teams showed excellent skill, teamwork and strong determination to win every game they played.

### Glebe Year 6 Team

The Glebe Year 6 team were outstanding from start to finish and ended the evening as champions. They won five of their six group-stage matches, with their only loss being a close 2-1 defeat to Charville. They then beat Whiteheath Juniors 2-1 in the semi final to reach the final. In a determined and skillful performance, they defeated Charville 2-1 to lift the trophy.

Harley, Luka, Fletcher, Keira, Joanna and Valentina all played to a very high standard and fully deserved their medals. Their brilliant victory also means that the Glebe Year 6 team have now qualified for the West London Finals in June.



Harley, Luka, Fletcher, Keira, Joanna and  
Valentina

### Glebe Year 5 Team

The Glebe Year 5 team were the standout best team on the day. They completed the tournament without losing a single match and only conceded one goal. They earned impressive wins against Harefield Juniors 3-0, Dr Triplets Primary 3-0, Newnham Juniors 2-0, Bourne Primary 2-1 and Warrender Primary 2-0. Their only draw was against Charville. Jack, Chester, Harry, Ellie, Surina and Erin all performed brilliantly and impressed everyone with their confidence, teamwork and skill.



Jack, Chester, Harry, Ellie, Surina and Erin



We are expecting a very special visitor to Glebe next week. Father Christmas will be visiting Glebe on his sleigh and distributing presents to each class.

A huge thank you to the Rotary Club of Hillingdon for providing this memorable experience for the children.

Please follow the link to support the Rotary Club:

<https://www.eventbrite.com/cc/rotary-club-santa-sleigh-collections-3700689>

Donations Link -

<https://www.justgiving.com/page/rotarysanta2025>

# REMEMBER

## Key Information & Reminders



### Christmas Jumper Day.

As is now Glebe tradition, we are going against the tide and will be having our Christmas Jumper Day on Wednesday 10th December to coincide with our in-school Christmas Fair



### Christmas Dinner Day.

Please don't forget to order your child's meal for Christmas Dinner Day on Tuesday 9th December via The Pantry.



### Christmas Fayre

We will be holding our annual Christmas Fayre on Wednesday 10th December during the school day. For those of you who are new to Glebe, this is a children and staff only event with each class being responsible for running a stall. We have set it up in an entrepreneurial style, with each class having a start-up amount of £25 and the class who makes the most profit wins. Each year group has an opportunity to spend around 30 minutes at the fayre which includes games, tombola, food and other attractions. We ask all the children to bring money in small denominations (no higher than 50p please) so it is easier to spend at a number of stalls. Please do not send your child in with notes as we do not hold the cash in school to give change. Pupils in Nursery, Reception and Years 1 & 2 are asked to bring in up to £3 and children in KS2 can bring in up to £5 in coins. Additionally, if you are able to help on a stall for a period between 9am - 12:10, please contact your child's class teacher.

# REMEMBER



## Key Information & Reminders



### Supporting a great cause at the Glebe Christmas Fayre...

Leo B. from 4V will be selling homemade bookmarks at this year's Christmas Fayre. All proceeds from Leo's bookmark sales will be donated to Shriners Hospital for Children, where he receives medical treatment from the most incredible team!

We hope you'll stop by his table at the Fayre, support his fundraising efforts, and pick up a Christmassy bookmark (or two!).



Leo

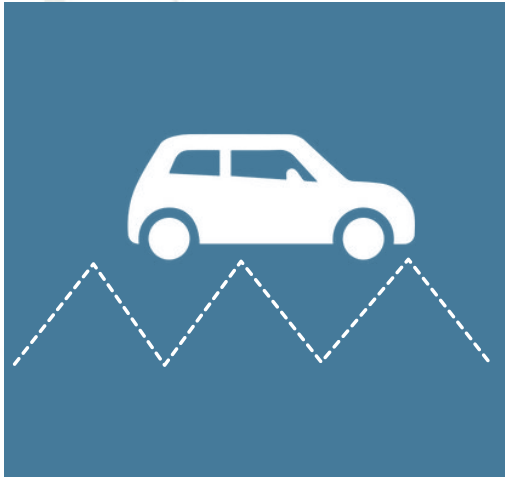


**Shriners Hospitals**  
for Children

# REMEMBER



## Key Information & Reminders



### **Parking on White Zig Zags**

I received an email from a resident this week who was almost hit by a car on the zebra crossing outside Glebe as a parent had parked on the white zig zag lines which obscured the view of the crossing for the oncoming vehicle. When questioned by the pedestrian, the parent stated that they had a blue badge. As I have said on this newsletter before, a blue badge does not entitle the holder to park just anywhere. It is illegal to park (or even stop) on white zig-zags by crossings at any time and the consequences are a fine and points on your licence. Additionally, none of our pupils have significant enough mobility issues that they could not have walked a few metres more to where it was legal and safer to park.

As you can imagine, had it been a child on the crossing, the driver may not have seen the child until it was too late. Many of our year 6 children walk home to develop independence ahead of starting secondary school so I urge you all to think about the whole school community, not just your own child.

### **Dolce School Grid Ordering System**

You should have received an email yesterday with your activation link to activate your account. You can start pre-ordering meals for next term via the app.

A welcome letter from Dolce and details of how to activate your account are on this newsletter.

I urge you to try to activate as soon as you can so any activation/ordering issues can be resolved by the time we break up for Christmas as the Dolce contract goes live on the first day back after Christmas (5<sup>th</sup> January). We want to ensure every pupil who wants a school meal gets one.



# REMEMBER



## Key Information & Reminders



### Dolce

I am pleased to share with you Dolce's spring term menu which you can find on page 16 of the newsletter.

You will notice that there are 4 options each day - 3 hot options and one 'packed lunch-style' option. The menu specifies whether the choice is vegetarian, vegan and/or gluten free which we hope will help you in selecting your option.

**Don't forget:** You will have the chance to 'Meet Dolce' at the drop in information session on **Tuesday 16<sup>th</sup> December** from **3.30 - 4.30pm** in the school hall.

### Meal Choices

Please can I ask that you discuss the option you have selected for your child each day? We have a growing number of children who are upset when they realise what their parent has selected for them to eat that day, often citing that they don't like that particular meal. Obviously, as most staff are parents themselves, we know that 'I don't like it' often means 'I just don't fancy that meal today' but the children are distressed and there are very limited alternatives to offer them as any school meal caterer will only provide that has been ordered to avoid wastage. We thank you in anticipation of your support with this.



# REMEMBER



Dear Parents & Guardians,

We'd like to issue a polite reminder about Christmas Dinner Day bookings - please carefully check your order for your School's designated day to ensure you are happy with your booking.

If you have previously made a default booking, then it's especially important that you review your selection now, as your default order may differ from what your child wishes to have on their Christmas Dinner Day.

Please note, sandwiches and jacket potatoes **can still** be ordered for Christmas Dinner Day

We thank you for your understanding and co-operation.

Login to School Meals Account

Thank you for using The Pantry

The Pantry Catering Team  
office@thepantrycatering.co.uk  
The Pantry (UK) Limited  
020 8813 7040

This week's winners are



Well done to both classes

2F 4V



# REMEMBER



## Autumn Term - 2025

Tuesday 9th December -	St. Giles Church Visits Christmas Lunch EYFS Christmas parties - pm
Wednesday 10th December -	Christmas Fayre (children & staff only) Christmas Jumper Day
Thursday 11th December -	Year 1 Christmas party - pm
Friday 12 <sup>th</sup> December -	Year 5 Christmas party - pm
Monday 15 <sup>th</sup> December -	Year 2 Christmas party - pm
Tuesday 16 <sup>th</sup> December -	Year 3 Christmas party - pm 'Meet Dolce' - 3.30-4.30 in the small hall
Wednesday 17 <sup>th</sup> December -	Year 4 Christmas party - pm
Thursday 18 <sup>th</sup> December -	Year 6 Christmas party - pm
Friday 19 <sup>th</sup> December -	Non-uniform day for House Point winning House

**Term ends 1 hour earlier (2.20/2.30)**



## Spring Term - 2026

Monday 5 <sup>th</sup> January -	Staff and children return to school - NO TRAINING DAY
----------------------------------	---

### Advanced Notice

Monday 19 <sup>th</sup> January -	School Photos - individuals and siblings
Thursday 22 <sup>nd</sup> January -	3G Class Assembly*
Thursday 5 <sup>th</sup> February -	3D Class Assembly*
Tuesday 10 <sup>th</sup> February -	Parent Consultation Evening 4 - 7pm
Thursday 12 <sup>th</sup> February -	3S Class Assembly* Parent Consultation Evening 4 - 7pm

**Half Term - Monday 16<sup>th</sup> - Friday 20<sup>th</sup> February 2026**

*\* parking on playground from 9.05 but not before for health and safety reasons*

# SPRING CHOICE

BREAD AND SALAD BAR  
AVAILABLE DAILY

## WEEK 1

WC: 5th Jan, 26th Jan  
16th Feb, 9th Mar, 30th Mar

## WEEK 2

WC: 12th Jan, 2nd Feb  
23rd Feb, 16th Mar

## WEEK 3

WC: 19th Jan, 9th Feb  
2nd Mar, 23rd Mar

MONDAY

Margherita Pizza & Potato Salad (V) (VG)  
Spinach & Potato Curry with Steamed Rice (VG) (GF)  
Jacket Potato & Fillings (V) (VG) (GF)  
Soft Roll with a Choice of Fillings (V) (VG)

Mixed Salad, Sweetcorn  
Fresh Daily Salad Selection, Homemade Bread

Ice Cream & Fruit (V)  
Dolce Homebake, Seasonal Fruit, Fruit Yoghurt

Margherita or Pepper Pizza (V) (VG)  
Cheesy Bean Wrap (V)  
Jacket Potato & Fillings (V) (VG) (GF)  
Baguette with a Choice of Fillings (V) (VG)

Baked Potato Wedges, Mixed Salad, Peas  
Fresh Daily Salad Selection, Homemade Bread

Chocolate Mousse (V)  
Dolce Homebake, Seasonal Fruit, Fruit Yoghurt

Margherita or Sweetcorn Pizza  
with Coleslaw (V) (VG)  
★ Veggie-Ball Curry & Steamed Rice (VG) ★  
Jacket Potato & Fillings (V) (VG) (GF)  
Sandwich with a Choice of Fillings (V) (VG)

Mixed Salad, Sweetcorn  
Fresh Daily Salad Selection, Homemade Bread

Crispy Cake (VG)  
Dolce Homebake, Seasonal Fruit, Fruit Yoghurt

TUESDAY

Oven Baked Sausages or Plant-based Sausages (VG)  
Fisherman's Pie (GF)  
Jacket Potato & Fillings (V) (VG) (GF)  
Soft Roll with a Choice of Fillings (V) (VG)

Mashed Potatoes, Savoy Cabbage, Carrots, Gravy  
Fresh Daily Salad Selection, Homemade Bread

★ Peach & Forest Fruit Cobbler with Custard (V) ★  
Dolce Homebake, Seasonal Fruit, Fruit Yoghurt

Spaghetti Bolognese  
Seasonal Vegetable Hot Pot (VG)  
Jacket Potato & Fillings (V) (VG) (GF)  
Baguette with a Choice of Fillings (V) (VG)

Broccoli, Sweetcorn  
Fresh Daily Salad Selection, Homemade Bread

Fruit Crunch & Custard (V)  
Dolce Homebake, Seasonal Fruit, Fruit Yoghurt

All Day Breakfast  
English Veggie Breakfast (V) (VG)  
Jacket Potato & Fillings (V) (VG) (GF)  
Sandwich with a Choice of Fillings (V) (VG)

Hash Brown, Baked Beans, Peas  
Fresh Daily Salad Selection, Homemade Bread

Fresh Fruit Salad (VG)  
Dolce Homebake, Seasonal Fruit, Fruit Yoghurt

WEDNESDAY

Roast Chicken (GF)  
★ Fish Finger or Quorn Dipper (VG) Wrap ★  
Jacket Potato & Fillings (V) (VG) (GF)  
Soft Roll with a Choice of Fillings (V) (VG)

Roast Potatoes, Carrots, Peas, Gravy  
Fresh Daily Salad Selection, Homemade Bread

Chocolate & Orange Cookie (VG)  
Dolce Homebake, Seasonal Fruit, Fruit Yoghurt

Roast Chicken (GF)  
★ Butternut Squash Wellington (V) (VG) ★  
Jacket Potato & Fillings (V) (VG) (GF)  
Baguette with a Choice of Fillings (V) (VG)

Mashed Potatoes, Cabbage, Peas, Gravy  
Fresh Daily Salad Selection, Homemade Bread

Jelly & Fruit (V) (VG)  
Dolce Homebake, Seasonal Fruit, Fruit Yoghurt

Roast Chicken (GF)  
Roasted Vegetable & Stuffing Tart (VG)  
Jacket Potato & Fillings (V) (VG) (GF)  
Sandwich with a Choice of Fillings (V) (VG)

New Potatoes, Carrots, Broccoli, Gravy  
Fresh Daily Salad Selection, Homemade Bread

Hot Chocolate Fudge Pudding (V)  
Dolce Homebake, Seasonal Fruit, Fruit Yoghurt

THURSDAY

Mild Chicken Korma (GF)  
Tomato & Herb Pasta Bake (V) (VG)  
Jacket Potato & Fillings (V) (VG) (GF)  
Soft Roll with a Choice of Fillings (V) (VG)

Steamed Rice, Broccoli, Sweetcorn  
Fresh Daily Salad Selection, Homemade Bread

★ Jam Roly Poly & Custard (V) ★  
Dolce Homebake, Seasonal Fruit, Fruit Yoghurt

Cheese Topped Cumberland Pie  
Shepherdess Pie (VG)  
Jacket Potato & Fillings (V) (VG) (GF)  
Baguette with a Choice of Fillings (V) (VG)

Green Beans, Carrots  
Fresh Daily Salad Selection, Homemade Bread

★ Yorkshire Parkin & Custard (V) ★  
Dolce Homebake, Seasonal Fruit, Fruit Yoghurt

Chilli con Carne & Steamed Rice (GF)  
★ Pasta Bar with a Choice of Toppings ★  
Jacket Potato & Fillings (V) (VG) (GF)  
Sandwich with a Choice of Fillings (V) (VG)

Sweetcorn, Carrots  
Fresh Daily Salad Selection, Homemade Bread

Dorset Apple Cake & Custard (V)  
Dolce Homebake, Seasonal Fruit, Fruit Yoghurt

FRIDAY

Breaded Fish Fingers or Fishless Fingers (VG)  
★ Cheddar & Broccoli Quiche (V) ★  
Jacket Potato & Fillings (V) (VG) (GF)  
Soft Roll with a Choice of Fillings (V) (VG)

Chips, Peas, Baked Beans, Ketchup  
Fresh Daily Salad Selection, Homemade Bread

Banana Cake (V)  
Dolce Homebake, Seasonal Fruit, Fruit Yoghurt

Breaded Fish Fingers or  
Crispy Crumb Vegetable Grill (VG)  
Baked Sweet Potato Omelette (V) (GF)  
Jacket Potato & Fillings (V) (VG) (GF)  
Baguette with a Choice of Fillings (V) (VG)

Chips, Peas, Baked Beans, Ketchup  
Fresh Daily Salad Selection, Homemade Bread

Lemon Cookie (VG)  
Dolce Homebake, Seasonal Fruit, Fruit Yoghurt

Breaded Fish Fingers or Crispy Golden Dippers (VG)  
Cheddar Cheese Pie (V)  
Jacket Potato & Fillings (V) (VG) (GF)  
Sandwich with a Choice of Fillings (V) (VG)

Chips, Peas, Baked Beans, Ketchup  
Fresh Daily Salad Selection, Homemade Bread

Lancashire Cookie (VG)  
Dolce Homebake, Seasonal Fruit, Fruit Yoghurt

★ NEW DISHES FOR 2025/26

V = Vegetarian | VG = Vegan | \*GF = Gluten Free

For full allergen information please refer to your School Grid Account. \*Gluten free products are prepared in a kitchen that handle products containing gluten. Any Halal menu variations will be displayed on SchoolGrid. Menus subject to change.

Dear Parent / Carer,

We are delighted to introduce ourselves as your new catering provider at Glebe Primary School. Our aim is simple: to provide every child with tasty, nutritious meals that they enjoy, while giving them the energy and focus they need for learning throughout the afternoon.

### SchoolGrid Account

To access school meals, you'll need to activate a SchoolGrid account. This easy-to-use system allows you to pre-order meals and view menus.

### Pre-ordering Meals

To reduce waste and help to ensure your child receives their preferred choice, please pre-order meals before 8:55am on the day. You can also pre-order for the entire term in advance. Please note - Menus may occasionally change due to unforeseen circumstances. For the latest updates please refer to SchoolGrid and check your emails for any pre-order cancellation notifications.

### Allergies or Dietary Requirements

It is essential that parents record their child's allergies on SchoolGrid so we can provide a safe meal.

If your child has an allergy outside the standard 14 allergens, or any additional dietary needs (such as vegan or halal), please contact Dolce Customer Care and we will assist you in updating this information.

If your child has a special diet or care plan, please speak to the school. Dolce's Area Manager will then work closely with yourself and the school to ensure your child's needs are safely met.

### Contact Details

Dolce is your catering provider. If you have any questions, comments or suggestions regarding school meals, allergens, payments etc, please do not hesitate to contact our friendly Dolce Customer Care team

Availability - Monday to Friday 8am to 5pm

Phone - 01942 707709

Email - [customercare@dolce.co.uk](mailto:customercare@dolce.co.uk)

SchoolGrid is the Software provider we use. If you experience any technical issues with access to SchoolGrid, please contact SchoolGrid technical support on 01506 300310 or by email to [support@schoolgrid.co.uk](mailto:support@schoolgrid.co.uk)

Useful Information

[Packed Lunch vs School Meal](#)

[Dolce Website](#)





Dolce is a family run business, specialising in catering for education. As the new school term begins and preparations are made for the 'experience of a lunchtime' in your child's school, please take a moment to familiarise yourself with our simple meal ordering processes.

SchoolGrid enables you to pre-order meals, make card payments, add allergens, change personal details such as email address and password, view menus, recipes and ingredients etc.

## HOW TO SET UP YOUR SCHOOLGRID ACCOUNT

You do not need to do anything. Your school will add your child / children and your contact details to the system which will then activate your account. You will receive an email from SchoolGrid which includes your activation link. Please follow instructions carefully to fully activate your account. If you have not received this email, please contact your school office or Dolce Customer Care.

## HOW TO ORDER YOUR CHILD'S SCHOOL MEALS:

Please log into your SchoolGrid account and select [Order Meals]. You can scroll through the weeks and select meals for the full week or only the days you require.

The system will only allow you to pre-order a main meal, we do not take pre-orders for side dishes or desserts. These can be chosen by your child on the day and any dietary requirements will be taken into consideration by our trained serving team.

All pre-orders can be made in advance up until 08:55am on the morning of the meal to be taken.

Please note that pre-ordered meals will only be charged to your account once your child has collected their meal, at the time of lunchtime service.

To view Side dishes and Desserts available for a chosen day, please select:

[Full menu](#)

To view all of your selected pre-orders go to [Food] - [Current Orders]

## HOW TO VIEW ALL CHILDREN:

Move between your children's accounts on SchoolGrid by heading to the home page (click) and select **[other accounts]**. You can also change your child's name on the drop down box in the top right hand corner.



**Please note:** If you are using a mobile device you will need to select the three lines or three dots on the top right hand side, then select the option you require.

## FREE SCHOOL MEALS

All children are entitled to Free School Meals, so you do not need to make any payments for meals. The system already recognises this entitlement and will not charge you or ask for funds when placing pre-orders.

## HOW TO VIEW YOUR ACCOUNT HISTORY:

Once logged into your SchoolGrid account, please select **[account]** - **[view activity]**. This will show you all the meals that your child has received, charges applied and any payments you have made.

## HOW TO CANCEL A PRE-ORDERED MEAL:

If for any reason your child decides they no longer want the meal or they are absent from school, please cancel the pre-ordered meal. You can do this by logging into SchoolGrid, selecting the relevant day and then clicking **[cancel meal]**. You will need to do this no later than 8:55am on the morning of the meal to be taken.

## ALLERGENS:

If your child has any of the 14 main allergens or is diabetic, you can update this information directly on their SchoolGrid account:

- Go to **[Food]** > **[Allergens]**.
- Tick the relevant boxes and select **[Save Changes]**.
- Once selected, the system will automatically block meals containing your chosen allergens, preventing you from pre-ordering those dishes.
- You can view all dishes, their ingredients, carb counts and allergens by clicking on a dish. Go to **[Order meals]** and click on your chosen dish.

If your child has an allergen and you would like to discuss the menu choices further, please contact [customer@dolce.co.uk](mailto:customer@dolce.co.uk)/01942 707709 (option 1).

## SPECIAL DIET INFORMATION:

If your child has an allergy outside of the fourteen listed on SchoolGrid, follows a special diet or has other dietary requirements, e.g. vegetarian, vegan, Halal, please contact Dolce customer care where we may be able to add a dietary note to your child's account.

Please be aware that this note cannot prevent dishes being pre-ordered and so we strongly advise that you carefully check recipes and ingredients thoroughly before placing orders.

**Please remember that recording dietary information is the sole responsibility of the parent/carer and not the school. SchoolGrid operates independently from the school system, so Dolce kitchen staff rely solely on the information you, as a parent, provide on SchoolGrid.**



## SIDE DISHES AND DESSERTS

To view the full menu options please log on to your SchoolGrid account and go to [order meals]. You will see an orange tab [full menu] if you click this it will show you the full range of side dishes and desserts available for that day. This will also allow you to view all of the nutritional content.

Side dishes and desserts can not be pre-ordered but can be chosen, by your child, at the time of service. Dolce also provides a salad bar and fresh bread, each day.

## CHANGE OF ADDRESS OR PHONE NUMBER:

Go to [Account] - [Manage Contact Details] add your correct details and then click [Update]

## COMPLIMENT THE COOK:

If your child enjoys their meals, why not let the cook know! You can do this in [Account] - [Compliment the cook]. This is for simple compliments only, any feedback, complaints or questions should be sent to [customercare@dolce.co.uk](mailto:customercare@dolce.co.uk)

## CO-PARENTING / SHARED PARENTING

There can only be one main "standard" account holder on each child's SchoolGrid account. The standard account has full access to the above features.

A second parent can be added on a "Pre-order only account". This will allow you to make a pre-order only. If you would like to make a payment for school meals, you can only do this over the phone by calling customer care on 01942 707709 (option 1).

## FREQUENTLY ASKED QUESTIONS

### HOW DO I ACTIVATE A SCHOOLGRID ACCOUNT?

You do not need to do anything. Your school will add your child / children and your contact details to the system which will then activate your account.

### DO I NEED TO GIVE YOU NOTICE THAT MY CHILD WOULD LIKE SCHOOL MEALS?

We are very flexible and do not require notice for your child to have school meals.

### DO I NEED TO MAKE A PRE-ORDER?

We recommend you pre-order your child's meals to help ensure they receive their preferred choice and to avoid waste.

### HOW DO I VIEW THE PRE-ORDERS I HAVE MADE?

To view all of your selected pre-orders go to **[Food]** - **[Current Orders]**

### DOES SCHOOLGRID HAVE AN APP?

SchoolGrid does not have an app. Please log on to your SchoolGrid account through your device here <https://app.schoolgrid.co.uk/login>

### WHY CAN I NOT SEE THE MENU OPTIONS ON MY MOBILE?

If you are using a mobile device you will need to select the three lines or three dots on the top right hand side, then select the option you require.

### WHAT IF MY CHILD HAS AN ALLERGY?

If your child has one of the main 14 allergens or is Diabetic, you can tick this on their account **[Food]** - **[Allergens]**. Tick the relevant box and select **[save changes]**.

### WHAT IS THE LATEST I CAN PRE-ORDER A MEAL OR CANCEL A PRE-ORDER?

All pre-orders and cancellations can be made in advance up until 08:55am on the morning of the meal to be taken.

#### How to contact us:

Should you need any further assistance regarding the above information, please do not hesitate to contact Dolce Customer Care where a member of our friendly support team will be happy to help.

Email - [customercare@dolce.co.uk](mailto:customercare@dolce.co.uk)  
Phone - 01942 707709 (option 1)



## December's Musician of the Month

# *Pyotr Ilyich Tchaikovsky*




Now Playing



**SPOTIFY**

1:24 3:11



**About:** Pyotr Ilyich Tchaikovsky (7 May 1840 – 6 November 1893) was a Russian composer of the Romantic period. He was the first Russian composer whose music would make a lasting impression internationally. He wrote some of the most popular concert and theatrical music in the current classical repertoire, including the ballets Swan Lake and The Nutcracker, the 1812 Overture, his First Piano Concerto, Violin Concerto, the Romeo and Juliet Overture-Fantasy, several symphonies, and the opera Eugene Onegin.

**Genres:** Classical, Opera and Ballet

**Active from:** 1865 -1893

**Origin:** Votkinsk, Russia

Books to read...

If you like Tchaikovsky, try...



- Franz Schubert
- Modest Mussorgsky
- Francesca Caccini

# TRIPLE P SEMINAR

5-11 years olds



## Helping children develop healthy screentime habits

This seminar provides an overview of how screen time problems develop and offers strategies for parents to encourage healthy habits, manage conflict, and keep children safe online. This seminar will explore:

- **Understanding the problem:** How do parents recognise when screen time becomes a problem and how can they adapt this to the role of screens in modern life.
- **Strategies for healthy habits:** To provide parents with simple, positive strategies to encourage healthy screen use.
- **Conflict management:** Offers tips for managing disagreements related to screen time.
- **Online safety:** Help parents with strategies on how to keep their children safe online.
- **Balanced approach:** The seminar also acknowledges that screen time can be beneficial for entertainment, relaxation, education and aims to help families find the right balance.

### When and where

**Date:** Thursday 8th  
January 2026

**Time:** 9.30am - 11am

**Venue:** Glebe Primary  
School, Sussex Road,  
Ickenham UB10 8PH

For more information about this service, email [annmarief@familylives.org.uk](mailto:annmarief@familylives.org.uk) or call 07949 890 749

**We build better family lives together**

[www.familylives.org.uk](http://www.familylives.org.uk)

 familylives



HILLINGDON  
LONDON



## St GILES CHRISTMAS TREE FESTIVAL 2025

FRIDAY AND SATURDAY  
5th December 6pm-9pm  
& 6th December 11am-4pm

Today and tomorrow St Giles Church is hosting its annual Christmas tree festival.

Glebe school has entered a Christmas tree and we chose the theme of 'The Nativity'.

Each year group was allocated a character from the nativity which they decorated and these were then stuck onto the wooden baubles. If you get a chance, pop along to have a look at the wonderful Christmas trees.





YOU ARE INVITED TO

# CHRISTMAS

## at St Giles

**14 DEC**    **Family Christingle, 10am**  
**Contemporary Carols, 6pm**  
*with mulled wine and mince pies*

---

**21 DEC**    **Blue Christmas, 3pm**  
*A quiet, reflective service*  
**Carols by Candlelight, 6:30pm**  
*Joining with our friends at Ickenham URC for a traditional Carol service*

---

**24 DEC**    **\*NEW\* Family Praise Nativity, 2pm**  
*Come along dressed as a Nativity character & join in our joyful celebration of Jesus' birth*  
**Carols for the Family, 4:30pm**  
*The classic celebration continues.*  
*Tickets released Friday 12<sup>th</sup> December, please book via our website.*  
**BCP with Carols, 8pm**  
**Midnight Communion, 11pm**

---

**25 DEC**    **Family Communion, 10am**

For more information please see our website:  
[www.stgileschurch.co.uk](http://www.stgileschurch.co.uk)

# FESTIVE NIGHT

## at St Giles

FRIDAY 5 DECEMBER, 6-9PM

In the Church:

### Nativity Trail

*Come and explore the first Christmas story.*

In the Churchyard:

### Tree of Remembrance

*Place a star on the yew tree in the Churchyard in memory of a loved one.*

In the Church Hall:

### Christmas Tree Festival

*... and other stalls including:  
Santa's Grotto,  
Guess the name of the Bear,  
Tombola,  
Find the Chocolate Coin,  
& Chocolate Tombola*

For more information please see our website:  
[www.stgileschurch.co.uk](http://www.stgileschurch.co.uk)

# NURSERY



# HIGHLIGHTS

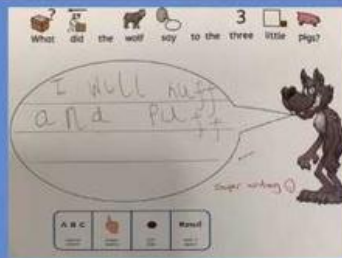
# RECEPTION



We have been learning about recycling



We have been reading 'The three little pigs'



In Maths we have been counting carefully

Object		Draw it
	6	
	5	
	4	
	2	
	3	
	2	

PIC COLLAGE

# HIGHLIGHTS

# YEAR 1



Year 1 have been making fruit salads!



PIC•COLLAGE

# HIGHLIGHTS

# YEAR 2

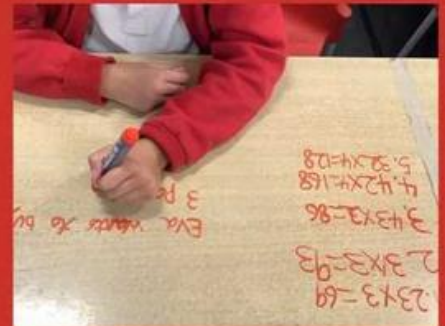
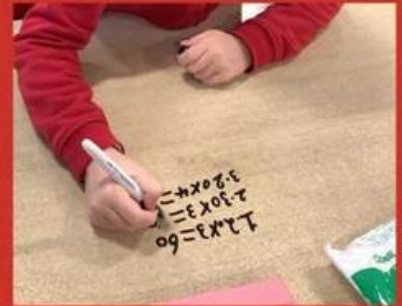
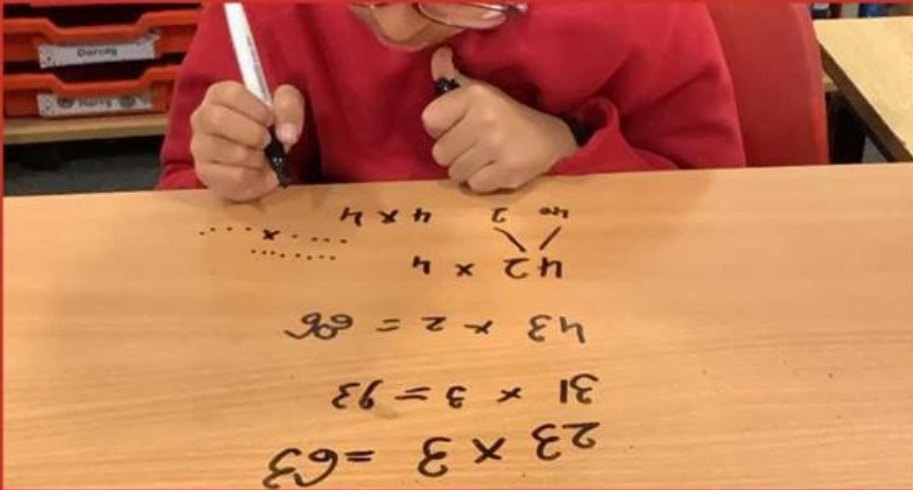


*Year 2 did a brilliant job performing the Nativity.*



# HIGHLIGHTS

# YEAR 3



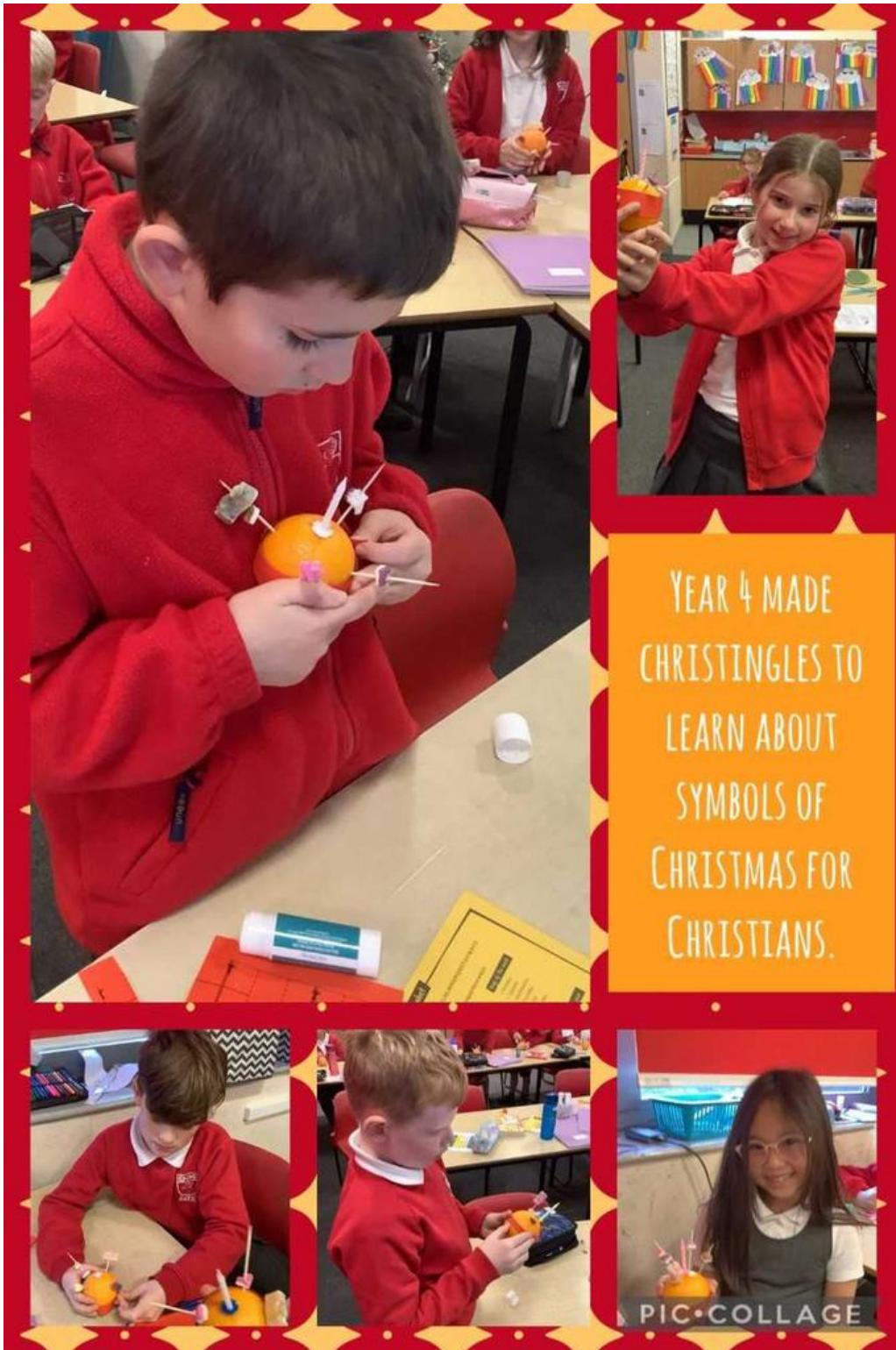
**In year three,  
we have been  
multiplying two  
digit numbers by  
one digit.**



PIC·COLLAGE

# HIGHLIGHTS

# YEAR 4



# HIGHLIGHTS

# YEAR 5



Learning about biodiversity at the Natural History Museum!



# HIGHLIGHTS

# YEAR 6



# HIGHLIGHTS



Wishing you all a lovely  
weekend

Mrs Penney

## Mystery Guest

Clue 1: I am a character from a book first published on 19 December 1843.

Clue 2: My story was written by Charles Dickens.

Clue 3: In the beginning of the story about me, I am very mean and I HATE Christmas. BAH HUMBUG!

Clue 4: I have even appeared in a film with the Muppets.



GLEBE  
WEEKLY  
SCHOOL  
NEWS